

mx-1

125 & 175cc

SERIAL NUMBERS

125 cc 4853 000001 to 4853 001050

175 cc 4843 000005 to 4843 000600



Parts Catalog

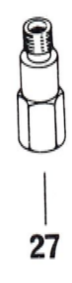
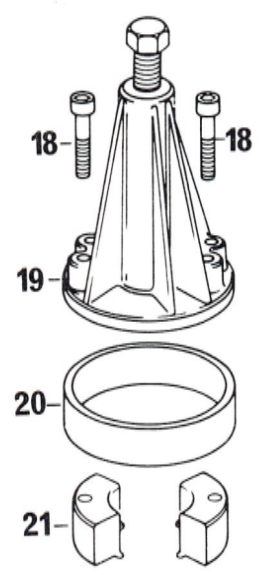
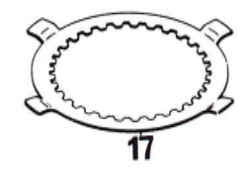
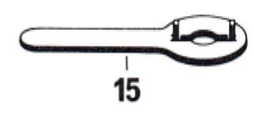
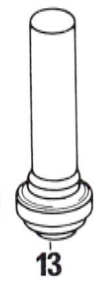
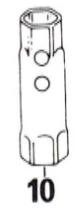
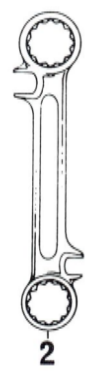
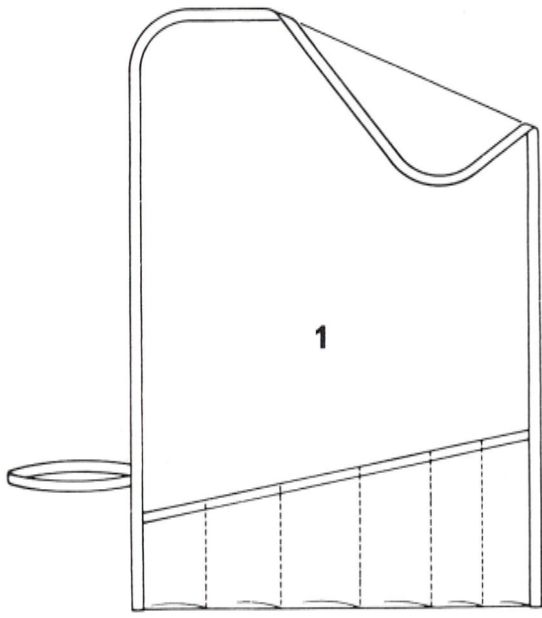
'74



*can-am**

motorcycles by bombardier

**Tool,
Special and
Owner's Kit.**



HOW TO USE THE FLAT RATE TIME (F.R.T.)

This F.R.T. (Flat Rate Time) is used to determine the standard labor time allowed for replacement of parts covered by the warranty during the period the warranty is in effect. The F.R.T. for those parts which are not listed (indicated by a —) should be determined from the operation closely related to the replacement of that part.

1. THE F.R.T. IS BASED ON THE FOLLOWING SERVICING CONDITIONS:

- a) Standard times specified are based on the condition that the necessary servicing tools are available close at hand and the work performed by a mechanic with normal skill.
- b) Time required for the servicing is calculated as shown:

example: Exact repair for a reasonable mechanic 120 min.
 Plus 5% for diagnosis 6 min.
 Plus 5% internal cleaning 6 min.
 Plus 5% for parts dept. 6 min.
 Plus 5% for paperwork 6 min.
 The F.R.T. is 2.4 hours

TOTAL TIME: 144 min.

2. The F.R.T. is also a guideline for time required for normal retail repairs and may be used for estimating repair cost.

3. METHOD OF COMPUTING

The job times are listed in tenth of an hour to simplify computation.

example: $0.3 = 18$ minutes
 $5.6 = 5$ hours and 36 minutes

CONVERSION CHART

Hours	Minutes	Hours	Minutes
0.1	6	0.6	36
0.2	12	0.7	42
0.3	18	0.8	48
0.4	24	0.9	54
0.5	30	1.00	60

4. COMPUTING THE F.R.T.

When several jobs are performed at the same time, make the calculation in the following manner.

- a) Jobs of non duplicated nature:

The F.R.T. for the job is obtained by totalling the F.R.T. for each part replaced.

example: Replacement of cylinder and clutch

SERVICING DETAILS	F.R.T.
Cylinder	0.6
Clutch plate	0.7
The F.R.T. for the job is:	$0.6 + 0.7 = 1.3$

- b) Jobs of duplicated nature:

Take the F.R.T. for the last part to be replaced.
 example: Replacement of cylinder head and piston.

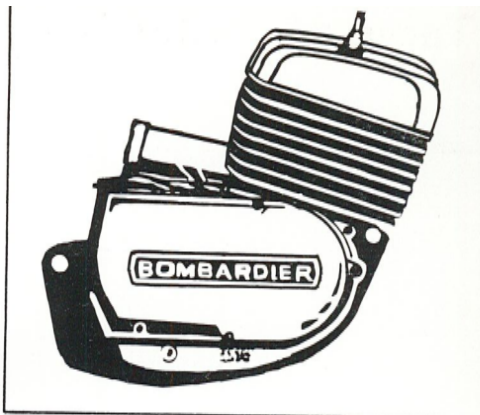
SERVICING DETAILS	F.R.T.
Cylinder head	0.5
Piston	0.7

The F.R.T. for this job is the last part replaced (piston): 0.7

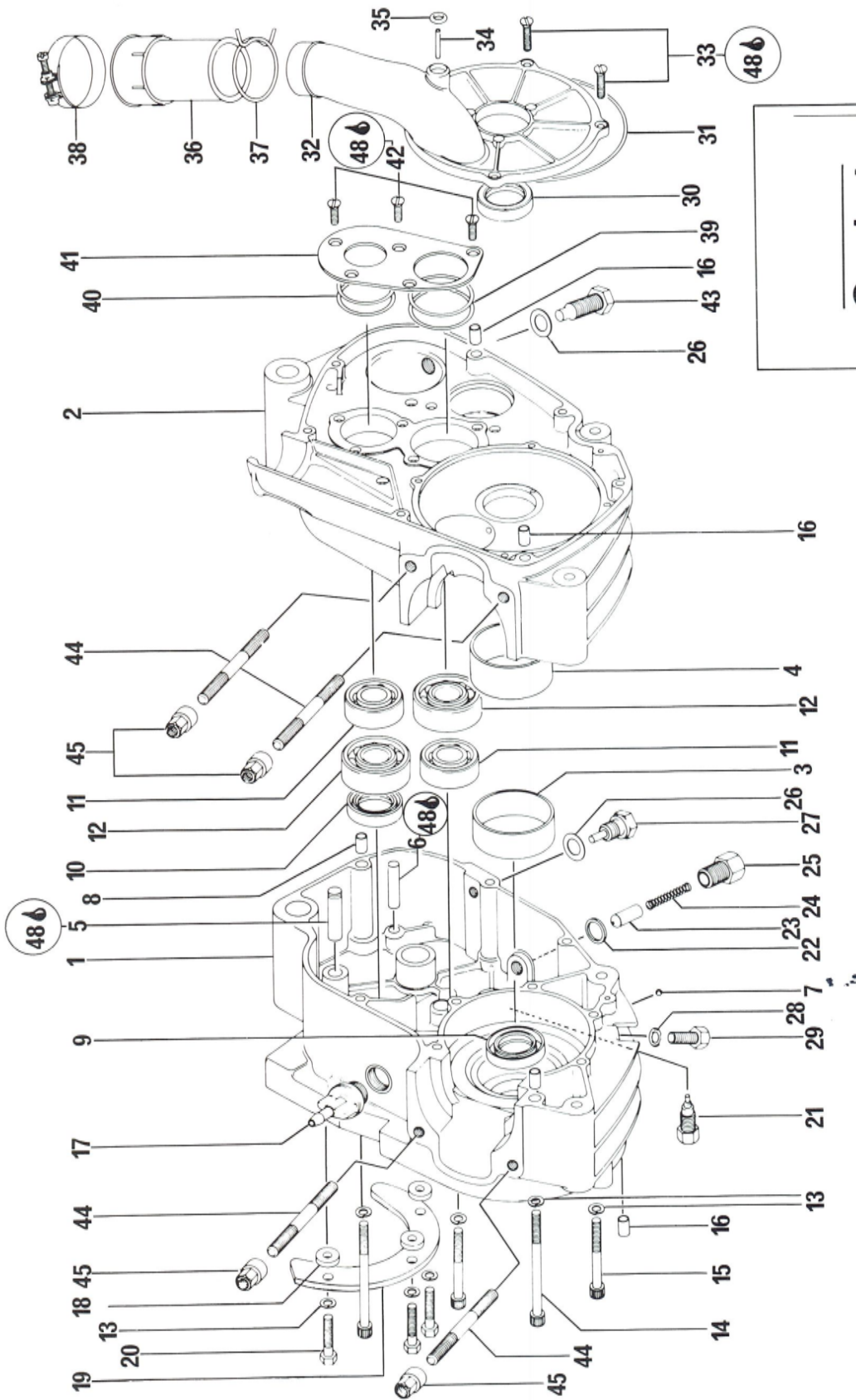
Table of contents

ENGINE	SECTION 1
Crankcase	
Crankshaft, cylinder, piston	
Magneto, clutch and oil pump covers	
GEAR BOX	SECTION 2
Transmission	
Clutch, kick start	
ELECTRICAL	SECTION 3
Magneto	
Wiring system (speedo, ignition switch)	
Lighting system	
Instruments	
CARBURETION	SECTION 4
Carburetor	
SPECIAL TOOLS	SECTION 5
Tools, special and owners kit	
FRAME	SECTION 6
Fork	
Main frame	
Swing arm, rear shocks	
CONTROLS	SECTION 7
Handlebar MX	
Handlebar T'NT	
Cables	
EXHAUST SYSTEM	SECTION 8
Exhaust pipe, muffler	
BODY	SECTION 9
Body parts (fenders, side covers)	
Fuel tank	
WHEELS	SECTION 10
Brake system	
Front wheel	
Rear wheel	
SPECIAL/OPTIONAL PARTS	SECTION 11
Optional parts	
Competition parts	
Service items	
NUMERICAL LIST	SECTION 15
PRICE LIST with Service bulletin	SECTION 16
PARTS BULLETINS	SECTION 17

ENGINE



Crankcase



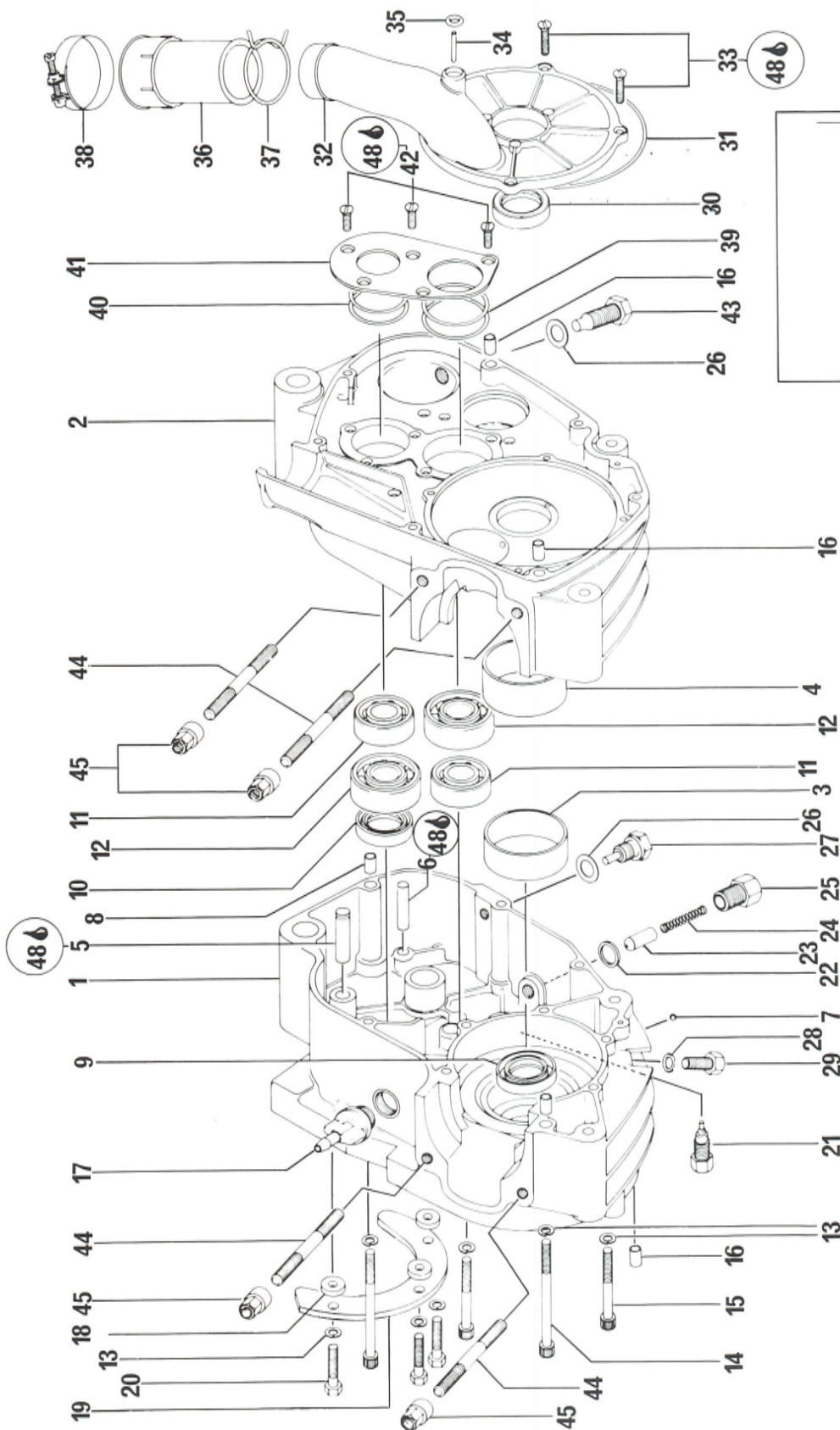
Gasket set

47 COMPLETE ENGINES
 48 LOCTITE

CRANKCASE DISC VALVE COVER

1974

ITEM NO	PART NUMBER	DESCRIPTION	MX-125	MX-175	Flat Rate Time
1 to 8	420 291 367	Crankcase Ass'y	1	1	4.0
3	420 260 390	Ring, Crankcase, Magneto Side	1	1	3.0
4	420 260 400	Ring, Crankcase, Clutch Side	1	1	3.0
5	420 249 940	Pin, Pawl Lever	1	1	2.5
6	420 249 980	Pin, Trans. Actuator Stop	1	1	2.5
7	420 932 990	Ball 5/32"	1	1	—
8	420 949 900	Dowel Pin	2	2	—
9	420 230 390	Seal, Magneto Side	1	1	1.7
10	420 230 420	Seal, Transmission Main Shaft	1	1	1.7
11	420 232 630	Ball Bearing 6203	2	2	3.0
12	420 232 640	Ball Bearing 6204	2	2	3.0
13	420 945 751	Lock Washer 6 mm	13	13	—
14	420 241 870	Screw, Allen Head M6 X 70	5	5	—
15	420 241 820	Screw, Allen Head M6 X 45	5	5	—
16	420 949 900	Dowel Pin	5	5	—
17	420 241 920	Oil Filler Cap M18 X 1.5	1	1	0.1
18	420 247 240	Spacer, Chain Guard	3	3	—
19	420 297 330	Chain Guard For Sprocket 13 T	optional		D.N.A.
	420 297 331	Chain Guard For Sprocket 14 T	1	1	0.1
	420 297 332	Chain Guard For Sprocket 15 T	optional		D.N.A.
20	420 240 035	Screw, Hex. Head M6 X 25	3	3	—
21	420 241 850	Contact Screw Ass'y, Neutral Indicator	1	1	0.1
22	420 230 380	Gasket Ring, Index Plug	1	1	—
23	420 258 550	Plunger, Index	1	1	0.1
24	420 239 710	Spring, Index Plunger	1	1	—
25	420 241 785	Plug, Transmission, Index	1	1	0.1
26	420 650 040	Gasket Ring	2	2	—
27	420 241 781	Plug, Magnetic Drain	1	1	0.1
28	420 950 141	Sealing Ring, Oil Drain	1	1	—
29	420 940 580	Screw, Hex. Head M8 X 16 Crankcase Drain	1	1	—
30	420 230 420	Seal Disc Valve Cover	1	1	1.5
31	420 230 310	O'ring, Disc Valve Cover	1	1	—
32 - 34	420 212 0337	Disc Valve Cover Ass'y	1	1	1.5
33	420 940 510	Screw, Countersunk Slot Head M5 X 16	4	4	—
34	420 224 040	Diffuser Tube	1	1	0.4
35	420 230 260	O'ring, Oil Inject. Inlet Port	1	1	—
36	420 267 740	Adaptor, Carburetor	1	1	0.4
37	420 251 840	Hose Clamp Carb. Adaptor	1	1	—
38	420 251 820	Hose Clamp, Carburetor	1	1	—
39	420 227 610	Shim 0.5 mm, Transmission Clutch Shaft Bearing	as required		—
	420 227 611	Shim 0.3 mm, Transmission Clutch Shaft Bearing	as required		—
	420 227 612	Shim 0.1 mm, Transmission Clutch Shaft Bearing	as required		—
40	420 227 520	Shim 0.5 mm, Transmission Main Shaft Bearing	as required		—
	420 227 521	Shim 0.3 mm, Transmission Main Shaft Bearing	as required		—
	420 227 522	Shim 0.1 mm, Transmission Main Shaft Bearing	as required		—
41	420 227 550	Retaining Plate, Transmission Bearing	1	1	0.1
42	420 940 315	Screw, Countersunk Slot Head M5 X 12	5	5	—
43	420 241 775	Screw, Kick Starter Stop	1	1	0.1



Gasket set

46

47 COMPLETE ENGINES
48 LOCTITE

CRANKCASE DISC VALVE COVER

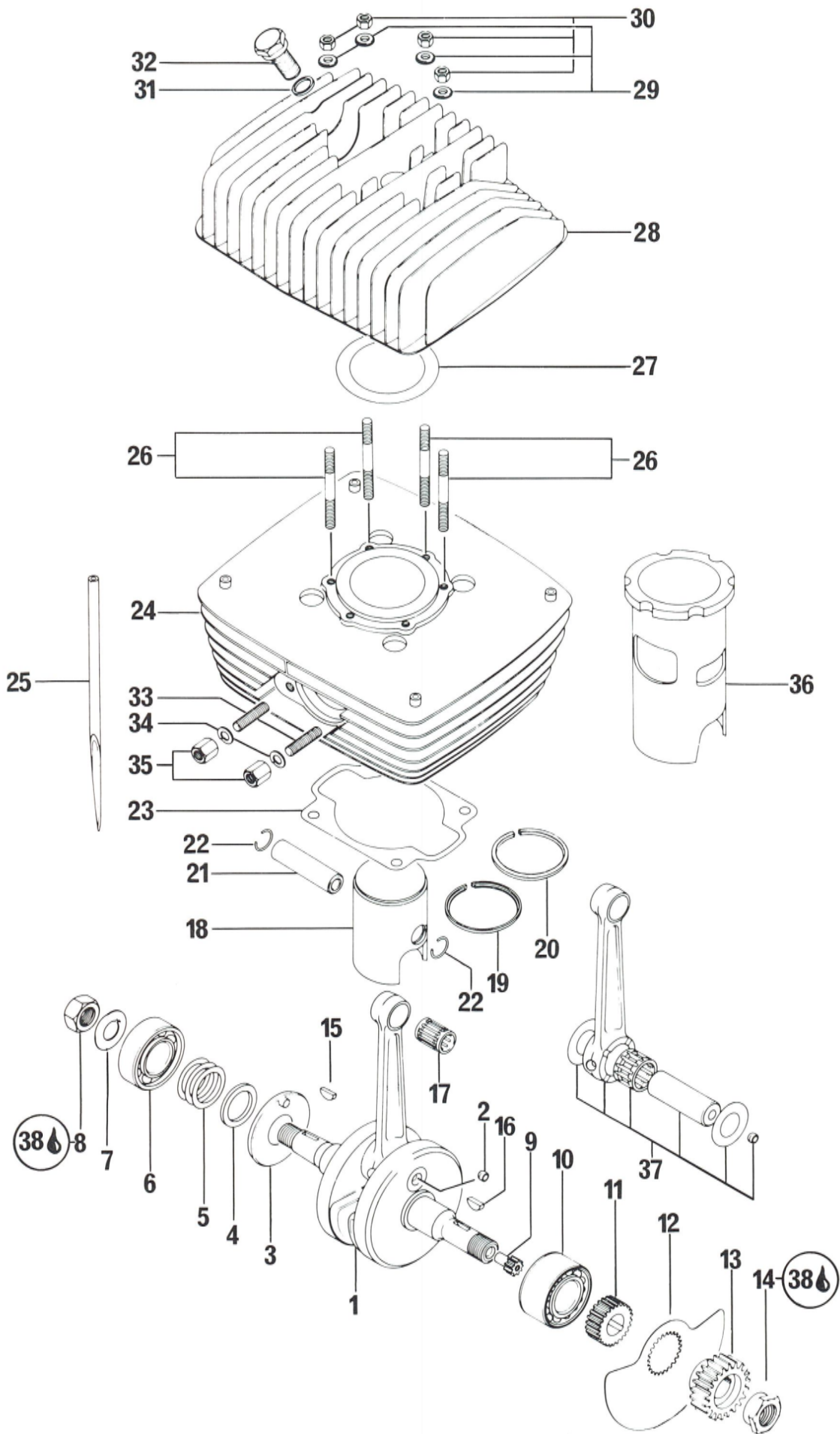
1974

ITEM NO	PART NUMBER	DESCRIPTION	MX-1	MX-1	Flat
			125	175	Rate Time
44	420 840 530	Stud, M8 X 40, Cylinder Base	4	4	0.6
45	420 242 580	Nut M8, Cylinder Base	4	—	—
46	420 291 470	Gasket Set For Engine Type 125	1	—	—
	420 291 475	Gasket Set For Engine Type 175	—	1	—
47	734 003 002	Complete Engine Spare 125 cc. w/o Electronic Box	—	—	—
		<i>magneto ass'y</i> Magneto Generator Ass'y, Carburetor And Levers	1	—	—
	734 003 004	Complete Engine Spare 175 cc. w/o Electronic Box	—	—	—
48		<i>magneto ass'y</i> Magneto Generator Ass'y, Carburetor And Levers	—	1	—
	747 020 000	Loctite No 271	as required	—	—

Crankshaft

Cylinder

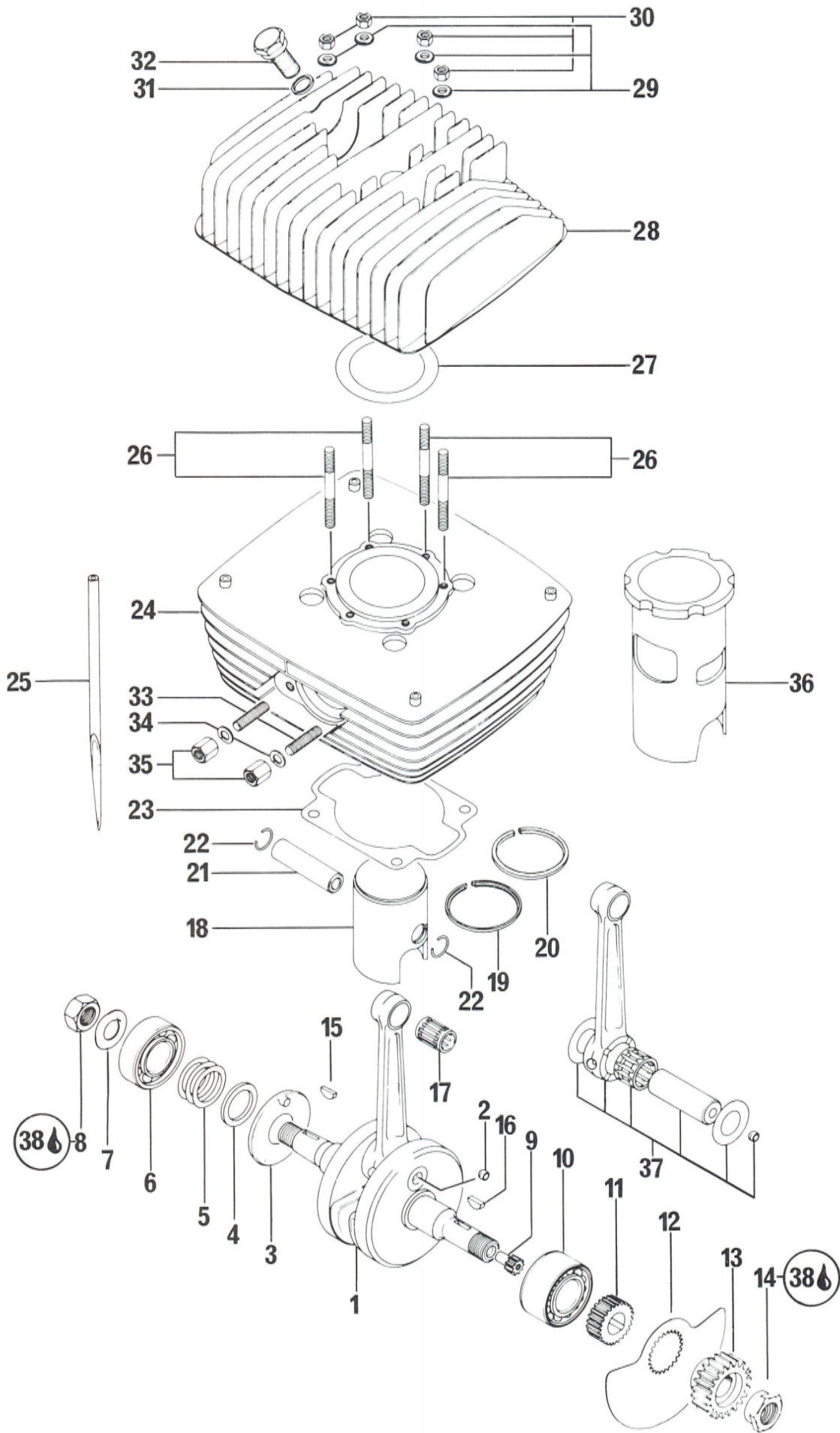
Piston



CRANKSHAFT PISTON CYLINDER CYLINDER HEAD

1974

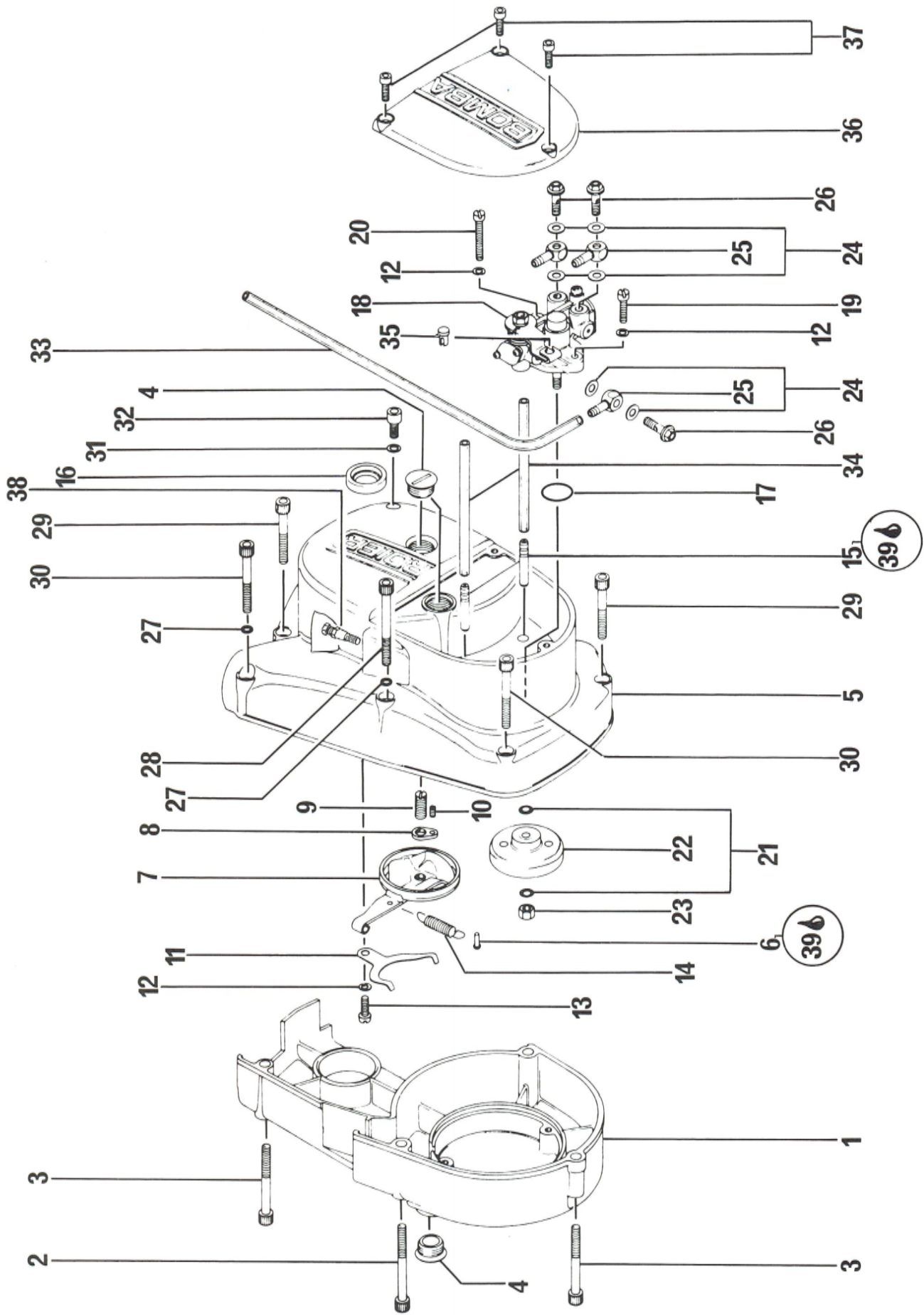
ITEM NO	PART NUMBER	DESCRIPTION	MX-1	MX-1	Flat
			125	175	Rate Time
1 - 2	420 291 370	Crankshaft Ass'y	1	—	3.5
1 - 2	420 291 375	Crankshaft Ass'y	—	1	3.5
2	420 227 510	Filler Cap	1	1	0.1
3	420 224 020	Plate, Oil Guide	1	—	3.6
	420 224 025	Plate, Oil Guide	—	1	3.6
4	420 247 250	Spacer, Crankshaft, Magneto Side 2.3 mm	1	1	3.6
5	420 944 470	Shim 0.2 mm, Crankshaft, Magneto Side	as required		—
	420 944 471	Shim 0.3 mm, Crankshaft, Magneto Side	as required		—
	420 944 472	Shim 0.5 mm, Crankshaft, Magneto Side	as required		—
	420 944 473	Shim 1.0 mm, Crankshaft, Magneto Side	as required		—
	420 944 474	Shim 0.1 mm, Crankshaft, Magneto Side	as required		—
6	420 232 760	Ball Bearing 6205, Crankshaft Magneto Side	1	1	3.6
7	420 245 310	Locking Washer, Crankshaft, Magneto Side	1	1	—
8	420 242 570	Hex. Nut M16 X 1.5 Crankshaft Magneto Side	1	1	0.1
9	420 234 920	Gear 9 T, Oil Pump Pinion	1	1	0.4
10	420 232 750	Ball Bearing 3205	1	1	3.6
11	420 247 215	Spacer, Disc Valve	1	1	1.5
12	420 224 015	Disc Valve	1	1	1.5
13	420 234 775	Drive Gear 21 T, Crankshaft	1	1	0.7
14	420 242 610	Nut M18 X 1.5 Crankshaft, Clutch Side	1	1	0.7
15	420 246 011	Key, Woodruff, Crankshaft Magneto Side	1	1	—
16	420 246 570	Key, Woodruff, Crankshaft Clutch Side	1	1	—
17	420 932 022	Needle Bearing, Piston Pin	1	1	0.7
18 - 19	420 291 415	Piston Ass'y w/Ring 54,0 Standard Size	1	—	0.7
	420 291 416	Piston Ass'y w/Ring 54,25 1st Oversize	1	—	D.N.A
	420 291 417	Piston Ass'y w/Ring 54,50 2nd Oversize	1	—	D.N.A
	420 291 418	Piston Ass'y w/Ring 54,75 3rd Oversize	1	—	D.N.A
	420 291 420	Piston Ass'y w/2 Rings 62,0 Standard Size	—	1	0.7
	420 291 421	Piston Ass'y w/2 Rings 62,25 1st Oversize	—	1	—
	420 291 422	Piston Ass'y w/2 Rings 62,50 2nd Oversize	—	1	—
	420 291 423	Piston Ass'y w/2 Rings 62,75 3rd Oversize	—	1	D.N.A
19	420 215 110	L-Trapez Ring 54,0 Standard Size	1	—	0.7
	420 215 111	L-Trapez Ring 54,25 1st Oversize	1	—	D.N.A
	420 215 112	L-Trapez Ring 54,50 2nd Oversize	1	—	D.N.A
	420 215 113	L-Trapez Ring 54,75 3rd Oversize	1	—	D.N.A
	420 215 120	L-Trapez Ring 62,0 Standard Size	—	1	0.7
	420 215 121	L-Trapez Ring 62,25 1st Oversize	—	1	D.N.A
	420 215 122	L-Trapez Ring 62,50 2nd Oversize	—	1	D.N.A
	420 215 123	L-Trapez Ring 62,75 3rd Oversize	—	1	D.N.A
20	420 215 130	Rectangular Ring 62,0 Standard Size	—	1	0.7
	420 215 131	Rectangular Ring 62,25 1st Oversize	—	1	D.N.A
	420 215 132	Rectangular ring 62,50 2nd Oversize	—	1	D.N.A
	420 215 133	Rectangular Ring 62,75 3rd Oversize	—	1	D.N.A
21	420 916 280	Piston Pin	1	—	0.7
	420 216 080	Piston Pin	—	1	0.7
22	420 945 635	Circlip, Piston Pin	2	2	0.7
23	420 230 280	Gasket, Cylinder Base	1	1	0.6
24	420 213 587	Cylinder With Sleeve Ass'y	1	—	0.6
	420 213 617	Cylinder With Sleeve Ass'y	—	1	0.6
25	420 260 420	Absorber Hose	4	4	0.5



CRANKSHAFT PISTON CYLINDER CYLINDER HEAD

ITEM NO	PART NUMBER	DESCRIPTION	MX-1	MX-1	Flat
			125	175	Rate Time
26	420 241 890	Stud M7 X 33.5 Cylinder Head	6	6	0.5
27	420 230 360	Shim, Cylinder Head	AR		—
	420 230 365	Shim, Cylinder Head	—	AR	—
28	420 213 590	Cylinder Head, Std. Compression Ratio 13:1	1	—	0.5
	420 213 595	Cylinder Head, High Compression Ratio 15:1	optional		D.N.A
	420 213 620	Cylinder Head, Std. Compression Ratio 13:1	—	1	0.5
	420 213 625	Cylinder Head, High Compression Ratio 15:1	optional		D.N.A
29	420 227 570	Washer 7,4 mm, Cylinder Head Nut	6	6	—
30	420 242 590	Hex. Nut M7 Cylinder Head	6	6	—
31	420 230 500	Gasket, Cylinder Head Plug	1	1	0.1
32	420 241 880	Plug M14 X 1.25 Cylinder Head	1	1	0.1
33	420 940 170	Stud M8 X 19.5 Exhaust Flange	2	2	—
34	420 945 752	Lock Washer 8 mm	2	2	—
35	420 842 130	Hex. Nut M8 Exhaust Flange	2	2	—
36	420 213 570	Cylinder Sleeve	1	—	D.N.A
	420 213 600	Cylinder Sleeve	—	1	D.N.A
37	420 291 374	Crankshaft Repair Kit	1	1	D.N.A
38	747 020 000	Loctite No 271	as required		—

Magneto, Clutch and Oil Pump Covers.

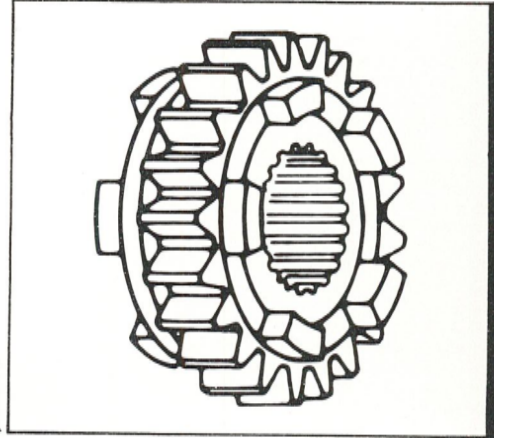


MAGNETO COVER—CLUTCH COVER—OIL PUMP

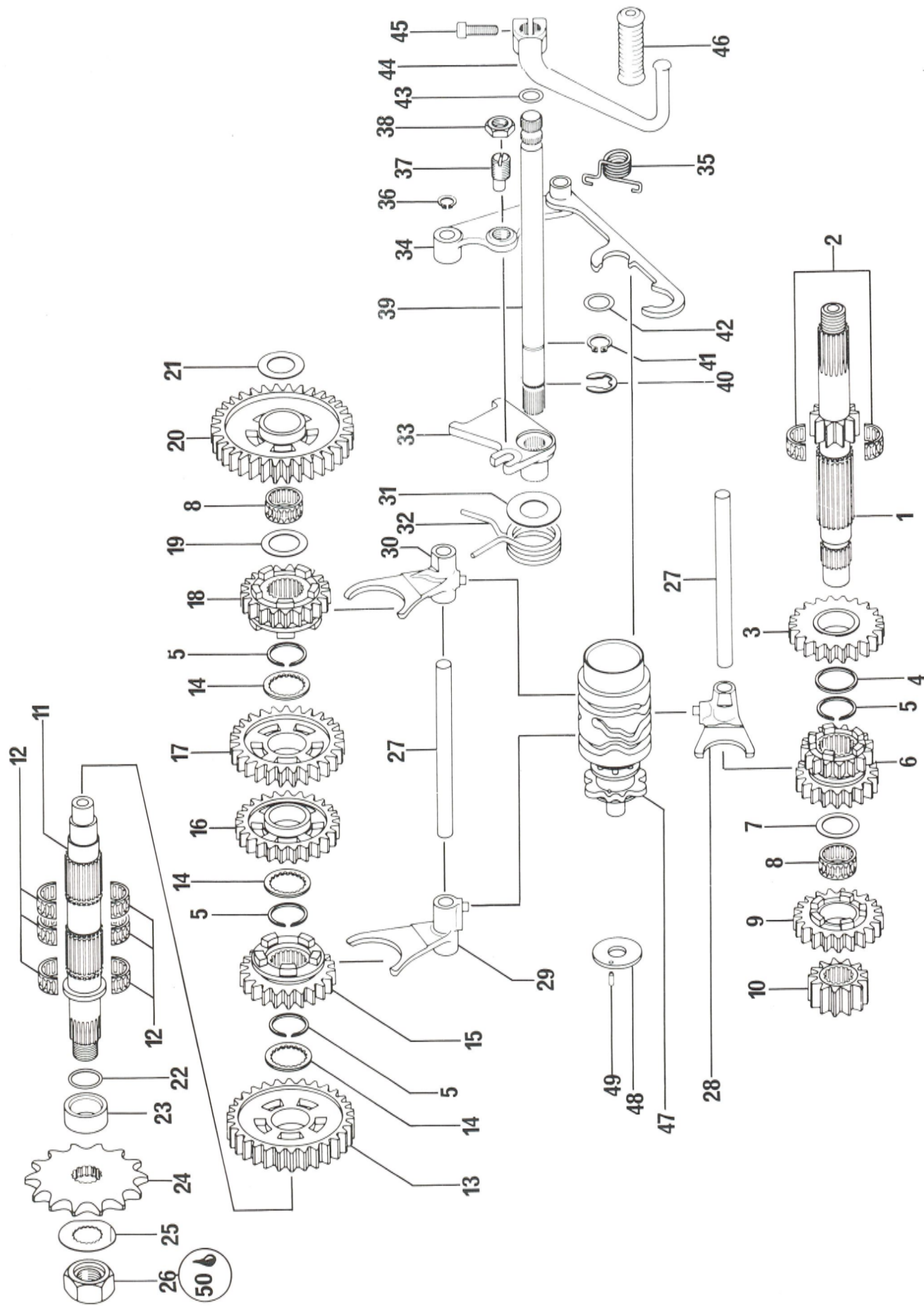
1974

ITEM NO	PART NUMBER	DESCRIPTION	MX-1	MX-1	Flat
			125	175	Rate Time
1	420 212 052	Magneto Cover	1	1	0.7
2	420 241 760	Cylinder Screw M6 X 50	2	2	—
3	420 241 820	Cylinder Screw M6 X 45	2	2	—
4	420 241 800	Plug, Adjustment	3	3	—
5	420 212 045	Clutch Cover	1	1	0.4
6	420 949 030	Drive Pin 3 X 8	1	1	—
7	420 259 618	Cam Ass'y, Clutch Release	1	1	0.5
8	420 259 630	Plate, Clutch Adjustment Locking	1	1	0.5
9	420 241 790	Screw M8 X 15, Clutch Adjustment	1	1	—
10	420 241 795	Screw M4 X 6 Clutch Adjustment	1	1	—
11	420 239 660	Spring, Clutch Cam Retaining	1	1	0.5
12	420 945 750	Lock Washer 5 mm	3	3	—
13	420 240 560	Screw, Slot Head M5 X 12	1	1	—
14	420 239 630	Spring, Clutch Cam Return	1	1	0.5
15	420 256 040	Valve Ass'y, Oil Pump Check	2	2	0.4
16	420 230 350	Seal, Kick Start Shaft	1	1	—
17	420 230 370	O'ring, Oil Pump Mount. Flange	1	1	—
18	420 291 430	Oil Pump Ass'y	1	—	0.5
	420 291 432	Oil Pump Ass'y	—	1	0.5
19	420 240 760	Screw, Slot Head M5 X 16	1	1	—
20	420 240 975	Screw, Slot Head M5 X 28	1	1	—
21	420 245 370	Locking Washer 6 mm	2	2	—
22	420 234 930	Gear, Oil Pump 34T	1	1	0.4
23	420 242 210	Hex. Nut M6, Oil Pump Gear	1	1	—
24	420 227 500	Gasket, Oil Banjo	6	6	0.2
25	420 256 020	Banjo	3	3	0.3
26	420 241 830	Bolt, Banjo	3	3	0.2
27	420 830 890	Ring, Sealing	2	2	—
28	420 241 760	Screw, Socket Head M6 X 50	1	1	—
29	420 241 810	Screw, Socket Head M6 X 35	4	4	—
30	420 241 815	Screw, Socket Head M6 X 40	3	3	—
31	420 230 410	Gasket, Oil Level Plug	1	1	—
32	420 840 370	Screw, M6 X 10, Oil Level Plug	1	1	—
33	420 256 032	Oil Line 560 mm	1	1	0.3
34	420 256 031	Oil Line 90 mm	2	2	0.3
35	420 297 340	Nipple, Split End	1	1	0.1
36	420 212 060	Oil Pump Cover	1	1	0.1
37	420 241 840	Screw, Allen Head M5 X 12	3	3	—
38	741 005 002	Oil Pump Cable Adjuster	1	1	0.2
39	747 020 000	Loctite No 271	as required		

GEAR BOX



Transmission

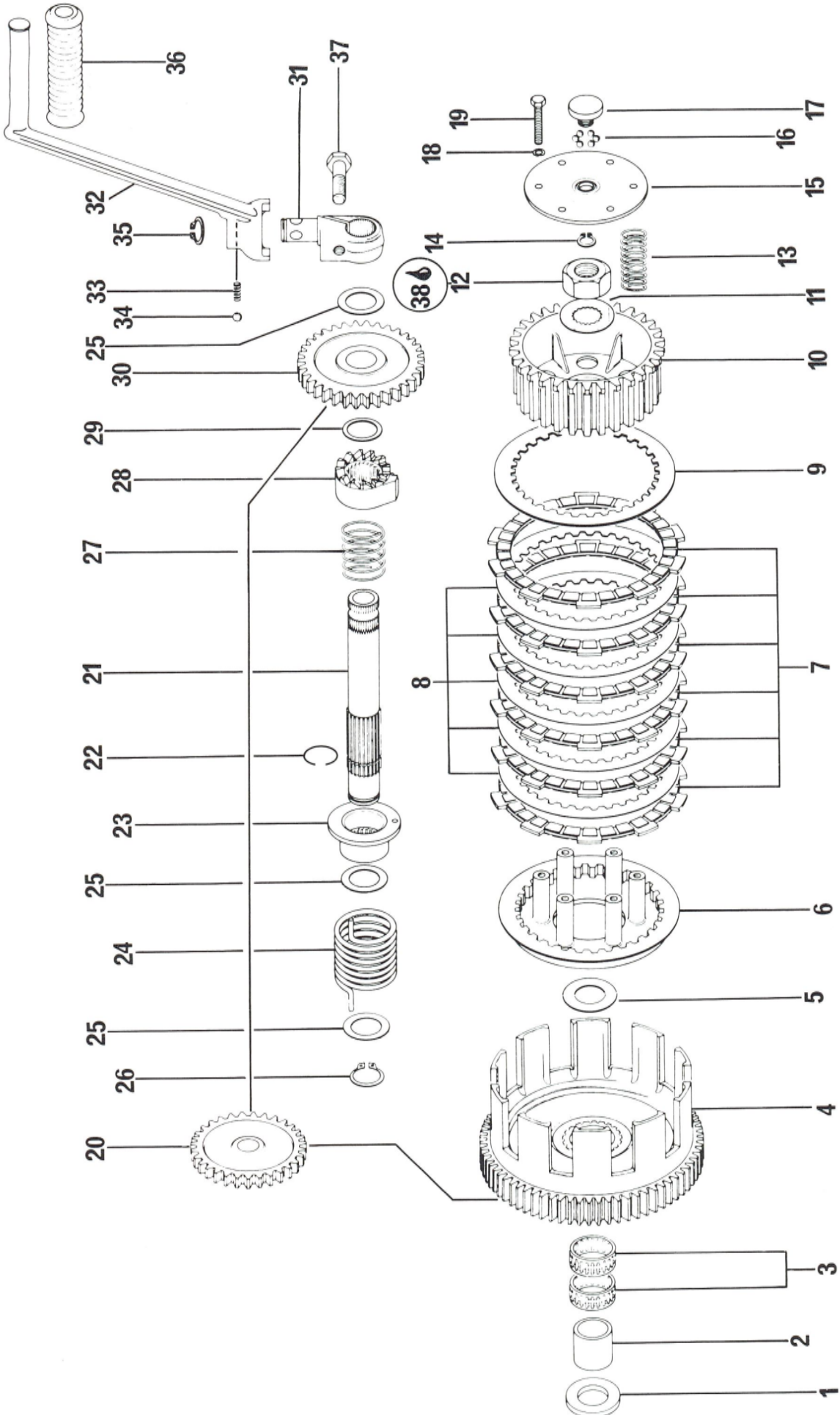


TRANSMISSION

1974

ITEM NO	PART NUMBER	DESCRIPTION	MX-1		Flat Rate Time
			125	175	
1	420 237 400	Clutch Shaft 10 T	1	1	3.2
2	420 232 665	Needle Bearing 20 mm, Clutch Shaft	2	2	—
3	420 234 885	Gear 6th, 22T, Clutch Shaft	1	1	3.2
4	420 227 470	Washer, Thrust Clutch Shaft, 1.5 mm	1	1	—
5	420 245 340	Snapping Clutch Shaft/Main Shaft	4	4	3.2
6	420 234 845	Gear 3rd/4th, 16/19 T Clutch Shaft	1	1	3.2
7	420 227 440	Washer, Thrust Clutch Shaft, 1 mm	1	1	—
8	420 232 660	Needle Bearing 20 mm, Clutch Shaft/Main Shaft	2	2	—
9	420 234 865	Gear 5th, 21T, Clutch Shaft	1	1	3.2
10	420 234 820	Gear 2nd, 13 T, Clutch Shaft	1	1	3.2
11	420 237 415	Main Shaft	1	1	3.2
12	420 232 740	Needle Bearing 21 mm, Main Shaft	6	6	—
13	420 234 815	Gear 2nd, 30 T, Main Shaft	1	1	3.2
14	420 227 460	Washer, Thrust Main Shaft	3	3	—
15	420 234 875	Gear 5th, 23 T, Main Shaft	1	1	3.2
16	420 234 855	Gear 4th, 25 T, Main Shaft	1	1	3.2
17	420 234 835	Gear 3rd, 27 T, Main Shaft	1	1	3.2
18	420 234 895	Gear 6th, 21 T, Main Shaft	1	1	3.2
19	420 944 466	Washer, Thrust Main Shaft, 1 mm		1	—
20	420 234 805	Gear 1st, 34 T, Main Shaft	1	1	3.2
21	420 227 430	Washer, Thrust Main Shaft, 1 mm	1	1	—
22	420 230 400	O'ring, Main Shaft	1	1	—
23	420 247 225	Spacer, Sprocket	1	1	0.2
24	420 236 952	Sprocket 15 T To Be Used With Chainguard No420 297 332	optional		D.N.A.
	420 236 951	Sprocket 14 T To Be Used With Chainguard No420 297 331	1	1	0.2
	420 236 950	Sprocket 13 T To Be Used With Chainguard No420 297 330	optional		D.N.A.
25	420 245 320	Washer, Locking Main Shaft	1	1	0.2
26	420 242 600	Hex. Nut M16 X 1.5 Main Shaft	1	1	—
27	420 258 540	Pin, Shifting Fork Guide	2	2	3.0
28	420 258 530	Fork, Shifting 5-6	1	1	3.2
29	420 258 520	Fork, Shifting 2-4	1	1	3.2
30	420 258 510	Fork, Shifting 1-3	1	1	3.2
31	420 427 070	Washer, Thrust Transmission Actuating Lever 1 mm	1	1	—
32	420 239 640	Spring, Transmission Act. Lever	1	1	3.2
33	420 258 570	Lever, Transmission Actuating	1	1	3.2
34	420 258 505	Pawl Ass'y	1	1	3.2
35	420 239 650	Spring, Pawl Ass'y	1	1	3.2
36	420 245 330	Snapping	1	1	—
37	420 241 805	Screw, Pawl Positioning	1	1	3.2
38	420 242 270	Nut, Hex. M12 X 1, Pawl Positioning	1	1	—
39	420 237 430	Shift Shaft	1	1	3.2
40	420 945 790	Retaining Ring	1	1	3.2
41	420 945 650	Snapping, Shift Shaft	1	1	—
42	420 944 851	Washer Thrust - 0.5 Shift Shaft	1	1	—
43	420 430 110	O'ring, Shift Shaft	1	1	—
44	420 248 780	Shift Lever	1	1	0.1
45	420 241 930	Screw, Socket Head, M6 X 20	1	1	—
46	420 260 200	Rubber, Shift Lever	1	1	0.1
47	420 258 457	Shift Drum Ass'y	1	1	3.2
48	420 227 560	Washer, Isolating Shift Drum	—	—	—
49	420 249 970	Pin, Dowel Shift Drum (Neutral Ground)	1	1	3.2
50	747 020 000	Loctite No 271	as required		—

Clutch, Kick Start



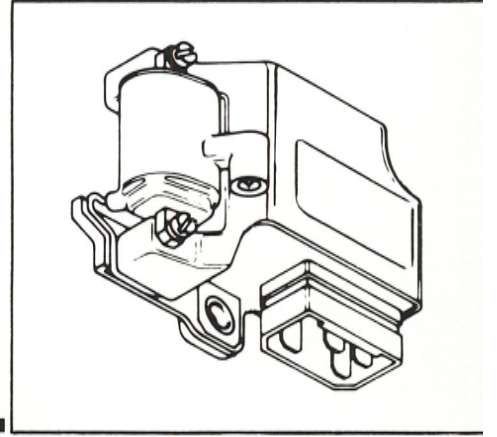
CLUTCH KICK START

1974

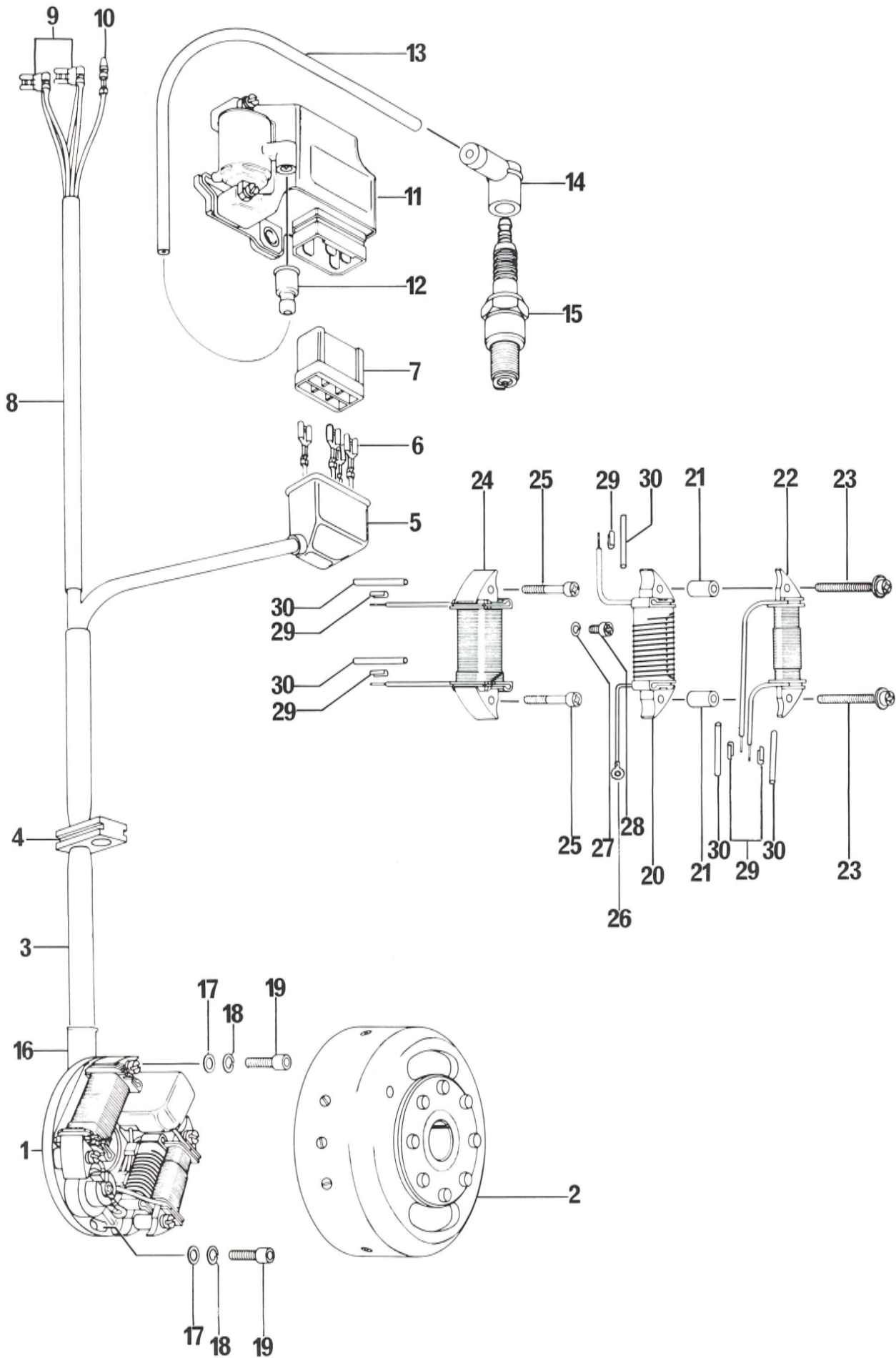
ITEM NO	PART NUMBER	DESCRIPTION	MX-1 125	MX-1 175	Flat Rate Time
1	420 227 600	Washer, Thrust Inner Clutch Drum 3 mm	1	1	—
2	420 232 700	Race, Inner Clutch Drum	1	1	0.7
3	420 232 650	Needle Bearing, 25 mm, Clutch Drum	2	2	—
4	420 259 647	Clutch Drum Ass'y	1	1	0.7
5	420 227 590	Washer, Thrust Outer Clutch Drum 1.5 mm	1	1	—
6	420 259 570	Plate, Clutch Inner Pressure	1	1	0.7
7	420 259 560	Plate, Clutch Friction	6	6	0.7
8	420 259 550	Plate, Clutch Driven	5	5	0.7
9	420 259 555	Plate, Clutch Outer Pressure	1	1	0.7
10	420 259 540	Clutch Hub	1	1	0.7
11	420 245 320	Washer, Transmission Shaft Locking	1	1	—
12	420 242 600	Hex. Nut M16 X 1.5 Transmission Shaft	1	1	—
13	420 239 620	* Spring, Clutch	6	6	0.6
14 to 17	420 259 595	Plate w/Hub Ass'y Clutch Spring Retaining	1	1	0.6
14	420 245 330	Snapring	1	1	—
15	420 259 590	Plate Clutch Spring Retaining	1	1	0.6
16	420 932 990	Ball 5/32"	12	12	—
17	420 259 600	Hub Clutch Spring Retaining	1	1	0.6
18	420 945 750	Lock Washer 5 mm	6	6	—
19	420 241 770	Screw Hex. Head M5 X 25	6	6	—
20	420 234 907	Gear 31T Kick Start Idler	1	1	0.6
21	420 237 420	Kick Start Shaft	1	1	3.2
22	420 245 350	Circlip, Kick Start Shaft	1	1	—
23	420 228 190	Hub Retaining Kick Start Spring	1	1	1.7
24	420 239 381	Spring Kick Start Return	1	1	1.7
25	420 944 466	Washer, Thrust 1 mm	5	5	—
26	420 945 660	Snapring, Kick Start Shaft	1	1	—
27	420 239 610	Spring, Kick Start Ratchet	1	1	0.6
28	420 228 180	Ratchet, Gear Kick Start	1	1	0.6
29	420 227 480	Washer, Thrust Kick Gear	1	1	—
30	420 234 915	Gear 34 T, Kick Start Drive	1	1	0.6
31 to 37	420 248 795	Lever Ass'y Kick Start	1	1	0.1
31	420 248 800	Hub, Kick Start	1	1	0.1
32	420 248 790	Lever, Kick Start	1	1	0.1
33	420 239 530	Spring, Kick Start lever	1	1	0.1
34	420 232 440	Ball 7/32" Kick Start Lever	1	1	—
35	420 945 840	Snapring, Kick Start Lever	1	1	—
36	420 260 210	Rubber Sleeve, Kick Start	1	1	0.1
37	420 241 991	Screw, Hex. Head M8 X 28	1	1	—
38	747 020 000	Loctite No 271	as required		—

* Note: Do Not Change Clutch Springs Individually, Change Set of 6 When Required

ELECTRICAL



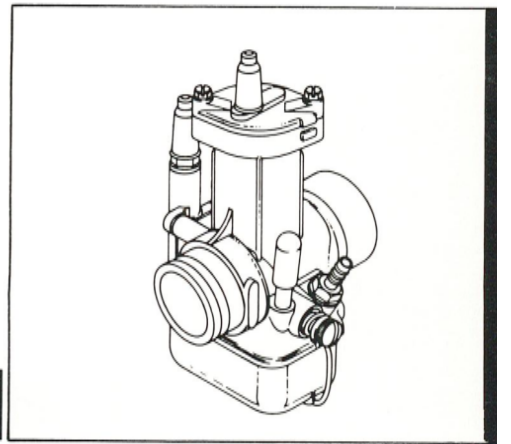
Magneto



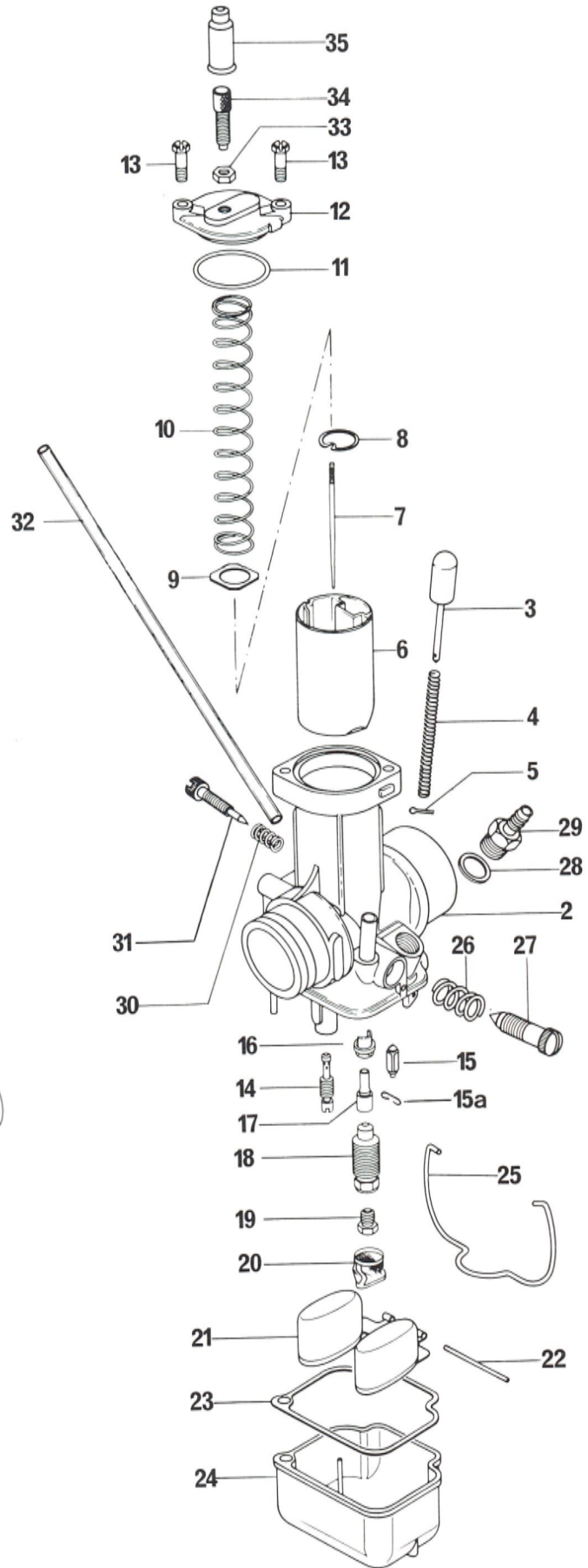
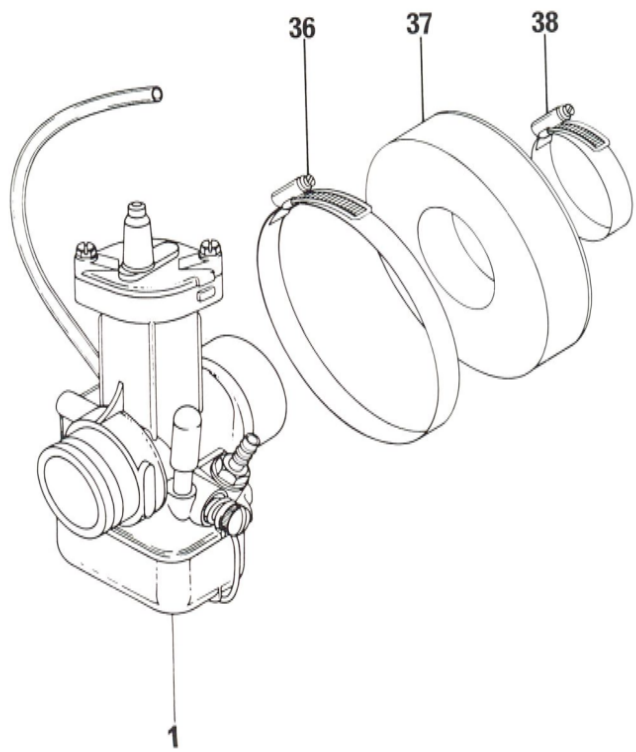
MAGNETO GENERATOR 12 V 55 W

ITEM NO	PART NUMBER	DESCRIPTION	MX-1	MX-1	Fla
			125	175	Rat Tin
1 - 2	420 291 451	Magneto Generator Ass'y	1	1	0.7
4 to 15					
1	420 291 461	Stator Plate Ass'y	1	1	0.7
2 to 11					
	420 264 560	Stator Plate, Alone	1	1	—
2	420 291 405	Flywheel	1	1	0.7
3	420 960 188	Protection Hose 325 mm	1	1	0.2
4	420 260 345	Cable Grommet	1	1	0.1
5	420 960 791	Protection Cap	1	1	0.2
6	420 864 011	Tab Receptacle (Straight)	4	4	0.1
7	420 865 455	Connector Housing	1	1	0.2
8	420 260 431	Protection Hose 350 mm	1	1	0.2
9	420 864 261	Tab Receptacle (Flag)	2	2	0.1
10	420 964 062	Terminal Pin	1	1	0.1
11	420 264 470	Electronic Box	1	1	0.2
12	420 960 360	Protection Cap	1	1	0.1
13	420 265 745	Ignition Cable 440 mm	1	1	0.1
14	420 865 205	Spark Plug Protector	1	1	0.1
15	420 899 740	Spark Plug N 2 G/Champion	optional		D.N..
	420 899 750	Spark Plug N 57 G/Champion	optional		D.N..
	420 899 760	Spark Plug N 59 G/Champion	1	1	D.N..
16	420 224 030	Holder, Cables	1	1	0.1
17	420 927 570	Washer 5.3 mm Armature Plate	2	2	—
18	420 945 750	Lock Washer 5 mm	2	2	—
19	420 840 510	Screw, Cylinder M5 X 16	2	2	—
20	420 264 510	Ignition Charging Coil w/o Cable	1	1	0.7
21	420 247 260	Distance Sleeve 10.5 mm	2	2	0.3
22	420 264 500	Lighting Coil w/o Cable (15 Watt)	1	1	0.7
23	420 841 025	Screw, Cylinder M4 X 28	2	2	—
24	420 264 490	Lighting Coil w/o Cable (40 Watt)	1	1	0.7
25	420 841 030	Screw, Cylinder M4 X 22	2	2	—
26	420 965 700	Ring Tongue Terminal M4 (Ground)	1	1	0.4
27	420 945 758	Lock Washer 4 mm	1	1	—
28	420 941 271	Screw, Cylinder M4 X 6 (Ground)	1	1	—
29	420 264 530	Cable Splice	5	5	0.4
30	420 260 411	Splice Protection Hose 25 mm	5	5	0.4

CARBURETION



Carburetor

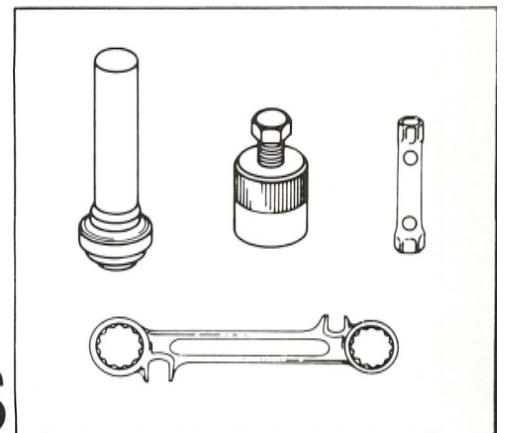


CARBURETOR

1974

ITEM NO	PART NUMBER	DESCRIPTION	MX-1		Flat Rate Time
			125	175	
1	420 291 440	Bing Double Float Carburetor 1/32/102	1	1	0.3
	420 291 441	Bing Double Float Carburetor 1/32/104	—	1	0.3
2	420 261 590	Carburetor Housing Ass'y	1	1	0.5
3	420 963 090	Carburetor Primer	1	1	0.5
4	420 938 100	Spring, Primer	1	1	0.5
5	420 245 240	Cotter Pin, Primer	1	1	—
6	420 261 631	Carburetor Piston (# 1 Chrome)	1	1	0.2
7	420 261 640	Jet Needle (1 Ring Identification)	optional		D.N.A.
	420 261 641	Jet Needle (4 Ring Identification)	1	1	0.2
8	420 261 650	Needle Clip	1	1	—
9	420 227 630	Washer	1	1	—
10	420 239 700	Spring, Carburetor Piston	1	1	0.2
11	420 261 670	O'Ring	1	1	—
12	420 261 660	Top Cover Plate	1	1	0.2
13	420 241 430	Hex. Screw M5 X 12	2	2	—
14	420 963 142	Idler Jet 40	1	1	0.5
	420 963 141	Idler Jet 30	optional		D.N.A.
15	420 261 700	Float Needle	1	1	0.5
15a	420 261 710	Clip, Float Needle	1	1	—
16	420 261 690	Diffuser	optional		D.N.A.
	420 261 692	Diffuser	1	1	0.5
17	420 261 600	Needle Jet 2.76	optional		D.N.A.
	420 261 605	Needle Jet 2.73	optional		D.N.A.
	420 261 608	Needle Jet 2.70	1	1	0.5
18	420 963 130	Mixing Tube	1	1	0.5
19	420 268 983	Main Jet 150	1	—	0.5
	420 268 984	Main Jet 155	—	1	0.5
	420 268 979	Main Jet 130	optional		D.N.A.
	420 268 980	Main Jet 135	optional		D.N.A.
	420 268 981	Main Jet 140	optional		D.N.A.
	420 268 982	Main Jet 145	optional		D.N.A.
	420 268 985	Main Jet 160	optional		D.N.A.
	420 268 986	Main Jet 165	optional		D.N.A.
20	420 268 987	Main Jet 170	optional		D.N.A.
	420 268 988	Main Jet 175	optional		D.N.A.
	420 268 989	Main Jet 180	optional		D.N.A.
	420 261 620	Sieve Sleeve	1	1	0.5
21	420 963 190	Float	1	1	0.5
22	420 929 700	Pin (Float)	1	1	0.5
23	420 830 720	Gasket, Float Chamber	1	1	0.5
24	420 261 610	Float Chamber	1	1	0.5
25	420 963 180	Spring Clip (Float Chamber)	1	1	0.2
26	420 938 640	Spring Idle, Adjustment Screw	1	1	—
27	420 963 160	Idle Adjustment Screw	1	1	0.1
28	420 930 565	Sealing Ring	1	1	0.1
29	420 241 940	Nipple	1	1	0.1
30	420 939 880	Spring, Air Regulating Screw	1	1	—
31	420 963 150	Air Regulating Screw	1	1	0.1
32	420 256 034	Vent Line 280 mm	1	1	0.1
33	420 942 540	Hex. Nut M6 X 0.75	1	1	—
34	420 241 440	Adjustment Screw M6 X 0.75	1	1	—
35	420 260 370	Rubber Grommet	1	1	—
36	740 002 004	Hose Clamp (Air Box)	1	1	—
37	740 003 000	Carburetor Booth	1	1	—
38	740 002 003	Hose Clamp (Carburetor)	1	1	—

SPECIAL TOOLS

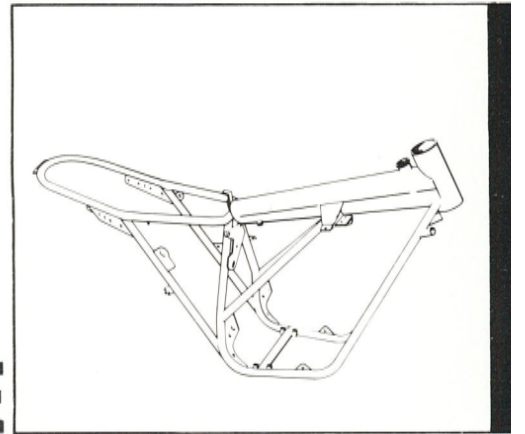


TOOLS

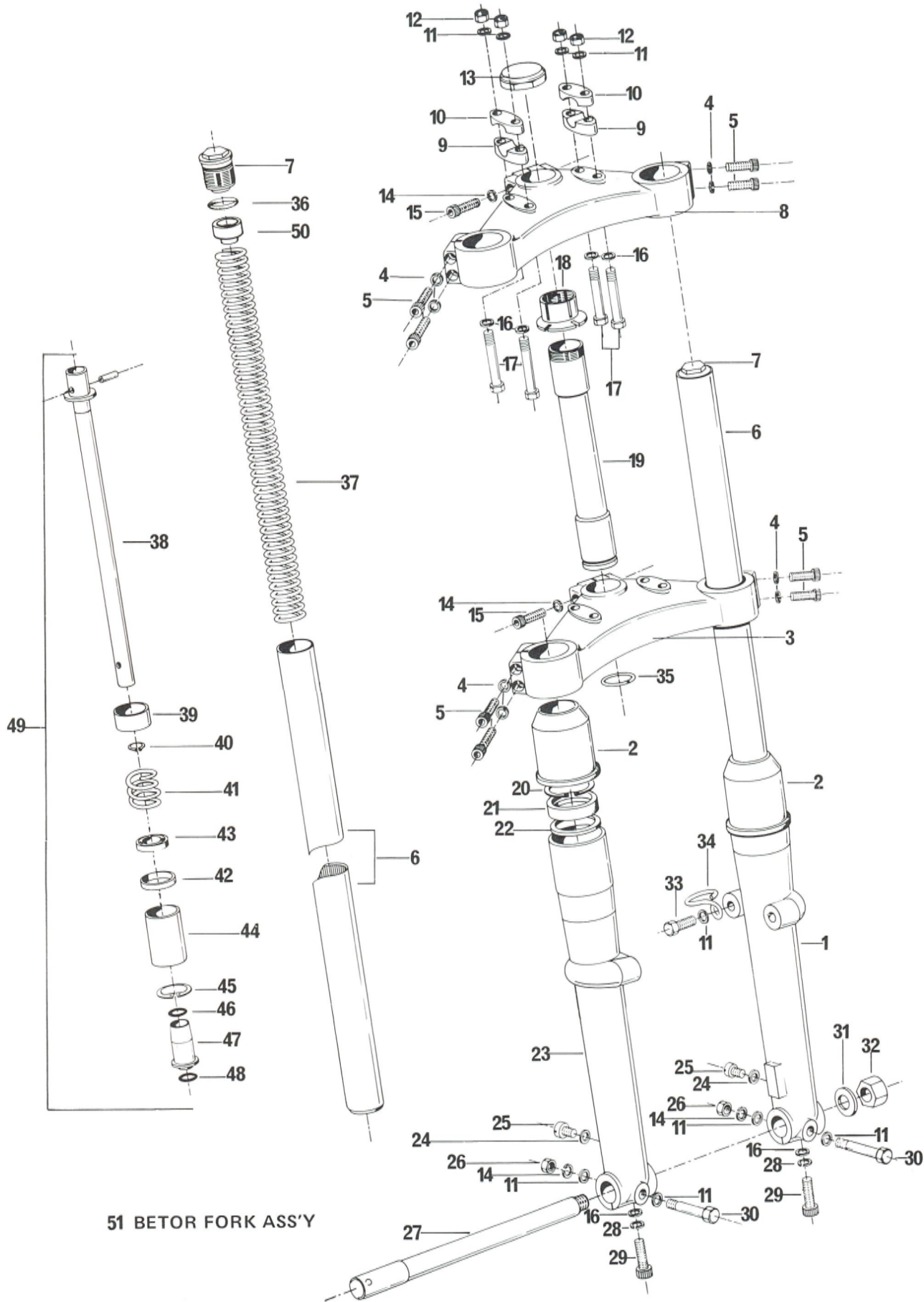
1974

ITEM NO	PART NUMBER	DESCRIPTION	MX-1		Flat
			125	175	Rate Time
1 to 10	420 277 780	Tool Kit	1	1	—
1	420 876 190	Tool Bag	1	1	—
2	420 876 820	Wrench-Combined	1	1	—
3	420 276 065	Wrench-Double Open End 10/13 mm	1	1	—
4	420 277 790	Wrench Allen #4	1	1	—
5	420 876 360	Wrench Allen #5	1	1	—
6	420 277 810	Wrench Allen #6	1	1	—
7	420 277 830	Blade-Screwdriver	1	1	—
8	420 277 840	Grip-Screwdriver	1	1	—
9	420 876 220	Wrench-Socket 11/13 mm	1	1	—
10	420 277 410	Wrench-Socket 17/21 mm	1	1	—
11	420 277 850	Oil Seal Insertion Jig (Kick Starter)	1	1	—
12	420 277 860	Oil Seal Insertion Jig (Crankshaft Magneto Side)	1	1	—
13	420 277 870	Oil Seal Insertion Jig (Crankshaft Clutch Side, Main Shaft Magneto Side)	1	1	—
14	420 277 805	Puller Ass'y For Flywheel	1	1	—
15	420 277 900	Wrench-Pump Gear	1	1	—
16	420 241 960	Bolt-Locating For Crankshaft	1	1	—
17	420 277 885	Clutch Hub Locking Tool	1	1	—
18	420 840 680	Screw Allen Head M8 X 40	1	1	—
19	420 876 296	Puller Ass'y	1	1	—
20	420 977 480	Ring For Puller	1	1	—
21	420 277 890	Ring Segment For Puller	2	2	—
22	748 033 000	Cam Adjuster Tool S & W Shock Absorbers	1	1	—
23	747 020 000	Loctite No 271	6cc	6cc	—
24	747 018 000	Silicone Dielectric Dow Corning DC-4	2oz	2oz	—
25	747 002 000	Silicone Dow Corning,Clear	3oz	3oz	—
	747 002 001	Silicone Dow Corning,Black	3oz	3oz	—
26	413 4026 00	Paint Black (Can)	16oz	16oz	—
27	748 019 000	Vapor Plug	1	1	—

FRAME



Fork

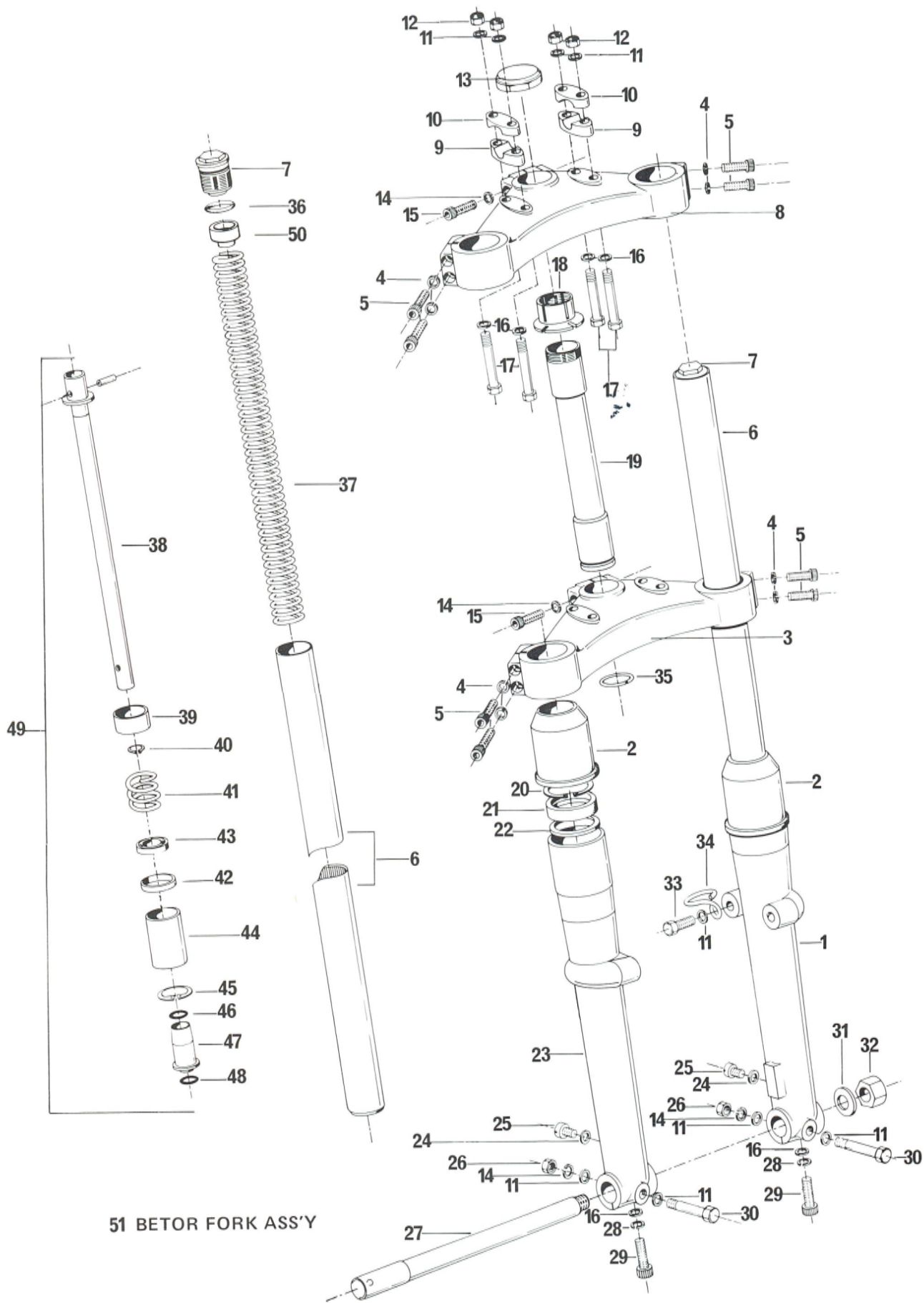


51 BETOR FORK ASS'Y

FORK

1974

ITEM NO	PART NUMBER	DESCRIPTION	MX-1 125	MX-1 175	Flat Rate Time
1	742 020 000	Fork Slider L.H.	1	—	0.5
	742 020 000	Fork Slider L.H. (For Serial No 4853 000000 to 4853 000405)	—	1	0.5
		Fork Slider L.H. (For Serial No 4853 000406 to 4853 000541)	—	1	0.5
2	742 025 000	Dust Boot	2	2	0.2
3	742 026 000	Lower Triple Clamp	1	—	0.7
	742 026 000	Lower Triple Clamp (For Serial No 4853 000000 to 4853 000405)	—	1	0.7
	742 026 001	Lower Triple Clamp (For Serial No 4853 000406 to 4853 000541)	—	1	0.7
4	224 762 100	Lock Washer 6 mm X 10	8	8	—
5	222 963 015	Bolt M6 X 20	8	8	—
6	742 015 000	Fork Tube	2	2	0.6
7	742 017 000	Spring, Retaining Cap	2	—	0.1
	742 017 000	Spring, Retaining Cap (For Serial No 4853 000000 to 4853 000405)	—	2	0.1
	742 017 001	Spring, Retaining Cap (For Serial No 4853 000406 to 4853 000541)	—	2	0.1
8	742 030 000	Top Triple Clamp	1	—	0.4
	742 020 000	Top Triple Clamp (For Serial No 4853 000000 to 4853 000405)	—	1	0.4
	742 030 001	Top Triple Clamp (For Serial No 4853 000406 to 4853 000541)	—	1	0.4
9	743 018 000	Handlebar Clamp Bottom	2	2	0.1
10	742 019 000	Handlebar Clamp Top	2	2	0.1
11	742 036 001	Washer 8 mm X 17 X 2	9	9	—
12	228 581 015	Nut Elastic Stop M8 X 1.25	4	4	—
13	742 029 000	Cap Nut	1	—	0.2
	742 029 000	Cap Nut (For Serial No 4853 000000 to 4853 000405)	—	1	0.2
	742 029 001	Cap Nut (For Serial No 4853 000406 to 4853 000541)	—	1	0.2
14	224 782 120	Lock Washer 8 mm, X 10	4	4	—
15	222 983 025	Bolt M8 X 30	2	2	—
16	224 080 140	Washer 8 mm, X 14 X 1.5	6	6	—
17	222 087 525	Bolt M8 X 75	4	4	—
18	742 027 000	Adjuster Stem Nut (Split Nut)	1	1	0.5
19	742 008 000	Steering Stem	1	1	0.7
20	732 802 001	Circlip	2	—	—
	732 802 001	Circlip (For Serial No 4853 000000 to 4853 000405)	—	2	—
21	742 010 000	Main Seal	2	—	0.6
	742 010 000	Main Seal (For Serial No 4853 000000 to 4853 000405)	—	2	0.6
	742 010 001	Main Seal (For Serial No 4853 000406 to 4853 000541)	—	4	0.6
	742 010 002	Main Seal (For Serial No 4853 000000 to 4853 000405)	—	opt	D.N.A.
	742 010 002	Main Seal (Must Be Used With Spacer # 742 040 001)	opt	—	D.N.A.
22	742 040 000	Spacer Seal	2	—	0.6
	742 040 000	Spacer Seal (For Serial No 4853 000000 to 4853 000405)	—	2	0.6
	742 040 001	Spacer Seal (To be Used Only With Seal # 742 010)	opt	—	D.N.A.
	742 040 001	Spacer Seal (For Serial No 4853 000000 to 4853 000405)	—	opt	D.N.A.
23	742 024 000	Fork Slider R.H.	1	—	0.5
	742 024 000	Fork Slider R.H. (For Serial No 4853 000000 to 4853 000405)	—	1	0.5
	742 024 001	Fork Slider R.H. (For Serial No 4853 000406 to 4853 000541)	—	1	0.5



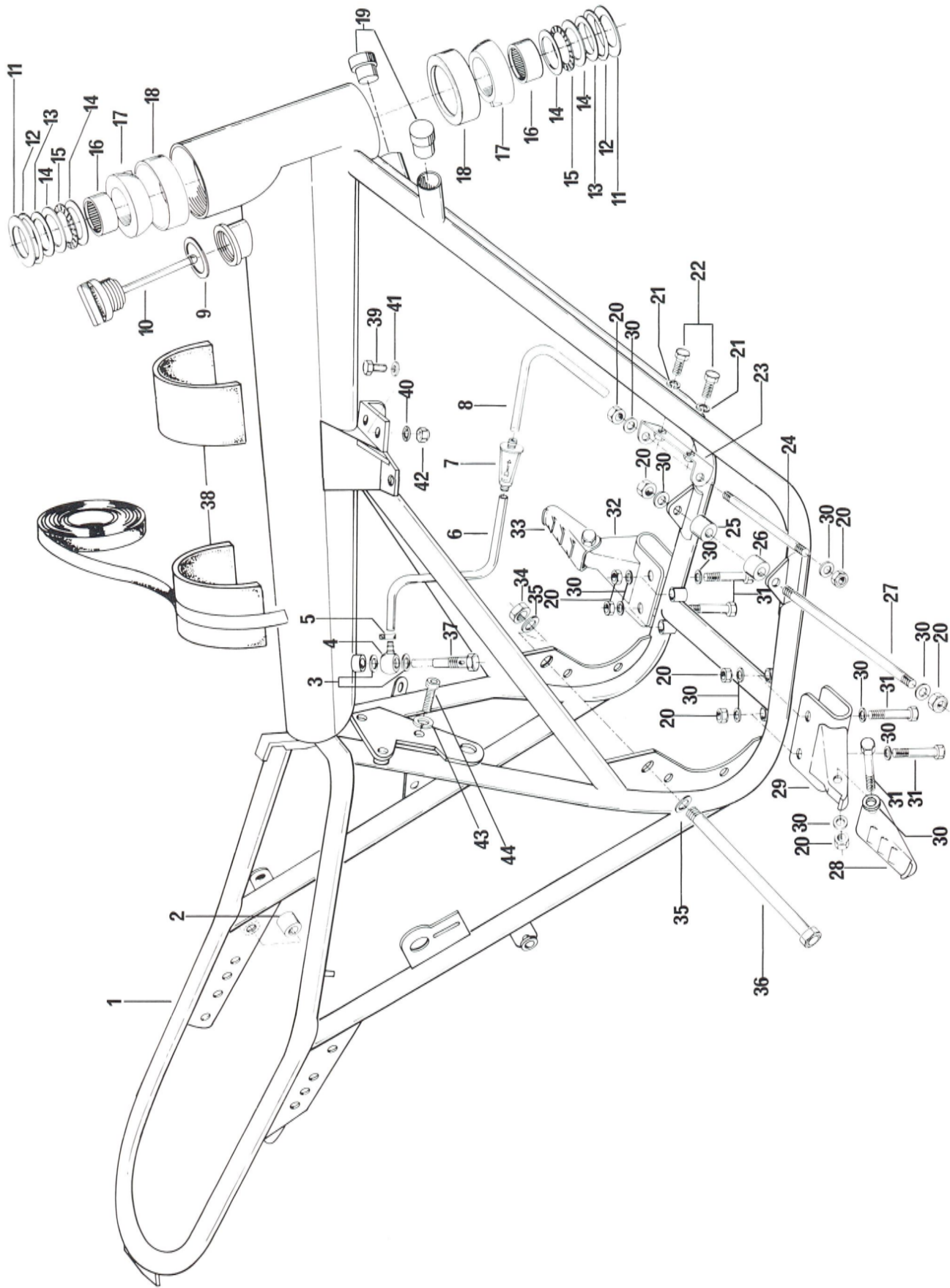
51 BETOR FORK ASS'Y

FORK

1974

ITEM NO	PART NUMBER	DESCRIPTION	MX-1		Flat Rate Time
			125	175	
24	224 061 122	Washer Fiber	2	2	—
25	223 160 725	Drain Screw	2	2	0.1
26	228 081 025	Nut M8 X 1.25 Hex.	2	2	—
27	742 034 000	Front Axle	1	1	0.1
28	224 781 140	Lock Washer 8 mm	2	2	—
29	222 982 515	Bolt 8 X 25 Allen	2	2	—
30	222 085 525	Bolt 8 X 55 Hex.	2	2	—
31	742 036 000	Washer	1	1	—
32	742 035 000	Nut	1	1	—
33	222 082 015	Screw Hex. Head Cap M84.25 X 20	1	1	—
34	742 001 000	Cable Guide, Brake	1	1	0.1
35	742 028 000	Circlip	2	2	0.1
36	732 401 003	O'Ring	2	2	—
37	742 009 000	Spring 15 lbs (No Color Code)	1	1	0.1
	742 009 002	Spring 15 lbs (Color Code, Yellow)	optional		D.N.A.
	742 009 003	Spring 14-24 lbs (Color Code, White)	optional		D.N.A.
38	742 014 000	Rod Damping	2	2	0.6
39	742 016 000	Bushing	2	2	0.6
40	732 802 000	Circlip	2	2	0.6
41	742 013 000	Spring, Top Out	2	2	0.6
42	742 023 000	Valve Orifice	2	2	0.6
43	742 022 000	Valve Washer	2	2	0.6
44	742 021 000	Damper Support Body	2	2	0.6
45	732 801 000	Circlip	2	2	0.6
46	224 082 062	Washer Fiber	2	2	—
47	742 039 000	Valve	2	2	0.6
48	732 401 002	O'Ring	1	1	—
49	742 031 000	Damper Ass'y Items 38 to 48	2	2	0.6
50	742 044 000	Spring Guide Upper (For Serial No 4853 000406 to 4853 000451)	2	2	—
51	742 003 000	Front Fork Betor Incl. Item 1 to 12 14 to 17, 21 to 23 25 to 27 29 to 31 36 to 38 to 51	1	—	0.7

Main Frame

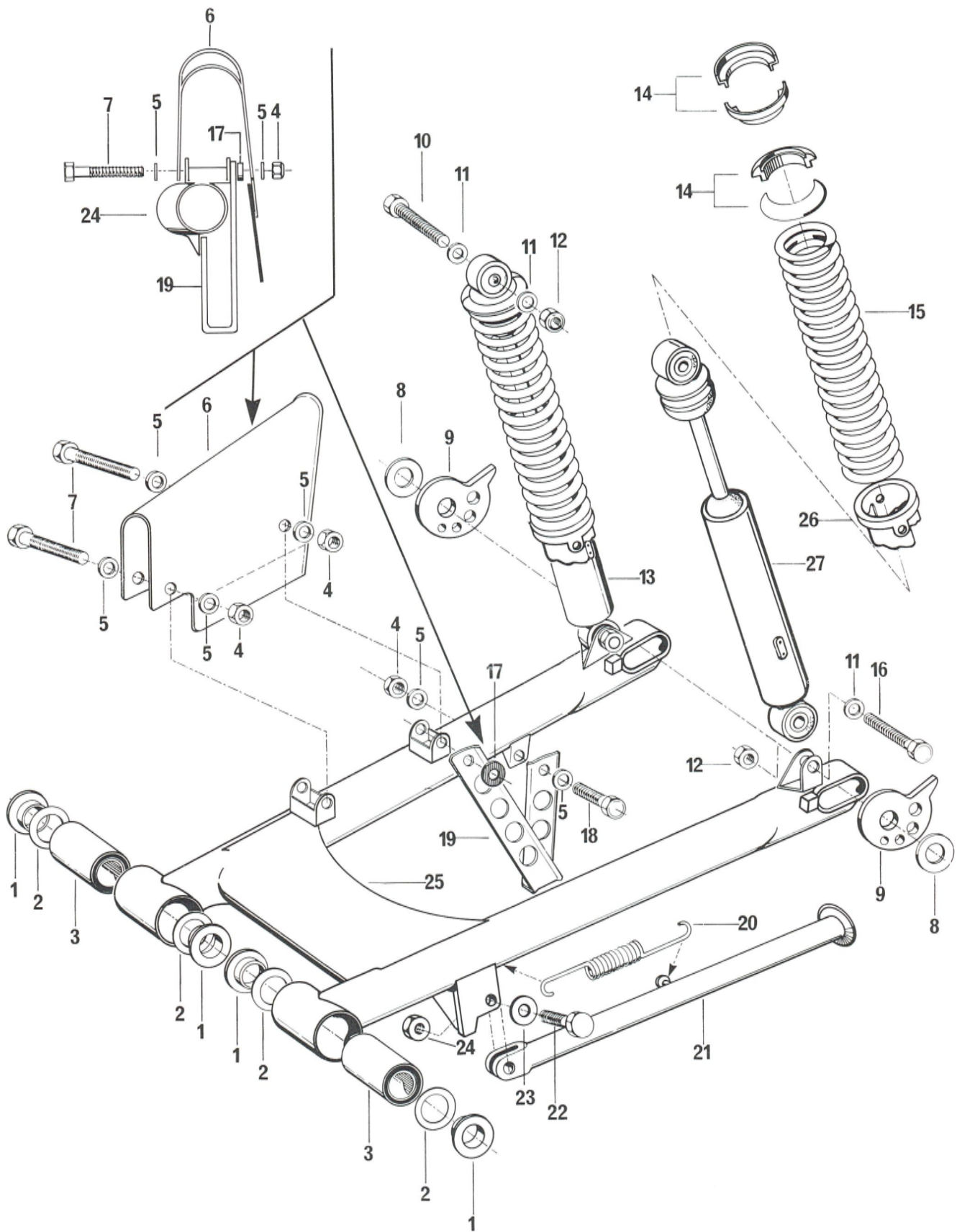


FRAME

1974

ITEM NO	PART NUMBER	DESCRIPTION	MX-1		Flat Rate Time
			125	175	
1 - 18	746 001 000	Frame	1	1	3.0
2	746 077 000	Spacer, Shock Bracket	1	1	0.1
3	744 011 000	Washer Banjo	2	2	—
4	744 004 000	Oil Outlet Banjo	1	1	0.1
5	408 8013 00	Hose Clamp	1	1	—
6	744 029 004	Tube 33 mm, (13" Long)	1	1	0.1
7	744 028 000	Filter	1	1	0.1
8	420 256 032	Oil Line - 560 mm, (22" Long)	1	1	0.1
9	744 033 000	Gasket, Oil Cap	1	1	—
10	744 032 000	Oil Tank Cap	1	1	0.1
11	746 015 000	Cover, Steering Cone	2	2	0.3
12	732 401 000	O'Ring 1 1/2 X 1 3/4 X 1/8	2	2	—
13	732 501 002	Shim .024"	2	2	—
14	732 901 000	Thrust Washer TRA 1625	4	4	—
15	732 701 000	Thrust Bearing NTA 1625	2	2	—
16	732 702 000	Needle Bearing GB-1612	2	2	—
17	746 010 200	Steering Cone 2° Standard	2	2	0.3
	746 010 000	Steering Cone - 0° Degree	optional		D.N.A.
	746 010 100	Steering Cone - 1° Degree	optional		D.N.A.
	746 010 300	Steering Cone - 3° Degree	optional		D.N.A.
18	746 052 000	Steering Cup	2	2	0.5
19	746 007 000	Bumper, Steering	2	2	0.1
20	228 581 015	Nut M8 X 1.25 Elastic Stop	10	10	—
21	224 781 140	Lock Washer 8 mm	2	2	—
22	222 081 515	Screw M8 X 1.25 X 15	2	2	—
23	734 006 000	Front Engine Mount	1	1	0.1
24	734 005 000	Front Engine Stud	1	1	0.1
25	746 006 000	Spacer R.H.	1	1	0.1
26	746 006 001	Spacer L.H.	1	1	0.1
27	734 004 000	Lower Engine Stud	1	1	0.1
28	746 012 000	Footrest R.H.	1	1	0.1
29	746 024 000	Foot Peg R.H.	1	1	0.1
30	224 081 170	Washer 8 mm, X 17 X 2	16	16	—
31	222 084 015	Screw M8 X 1.25 X 40	6	6	—
32	746 025 000	Foot Peg L.H.	1	1	0.1
33	746 011 000	Footrest L.H.	1	1	0.1
34	746 035 001	Nut M16 X 1.50	1	1	—
35	746 034 001	Washer 17 mm, X 28 X 2	2	2	—
36	746 002 000	Swing Arm Bolt	1	1	0.2
37	744 005 000	Bolt, Banjo Oil Outlet	1	1	0.1
38	748 003 000	Rubber Pad	2	2	0.3
39	222 061 615	Screw M6 X 1.00 X 16	1	1	—
40	394 0019 00	Lock Washer Internal-Tooth 1/4"	1	1	—
41	224 061 120	Washer 6 mm, X 12 X 1.5	1	1	—
42	228 561 015	Nut M6 X 1.00 Elastic Stop	1	1	—
43	224 761 110	Lock Washer 6 mm	2	2	—
44	222 961 515	Screw M6 X 1.00 X 15 Socket Head	2	2	—

**Swing Arm,
Rear Shocks.**

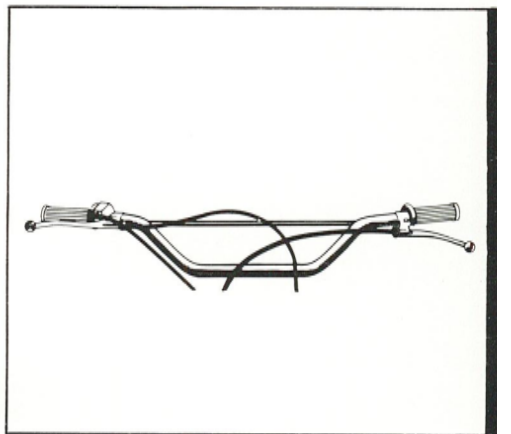


SWING ARM REAR SUSPENSION

1974

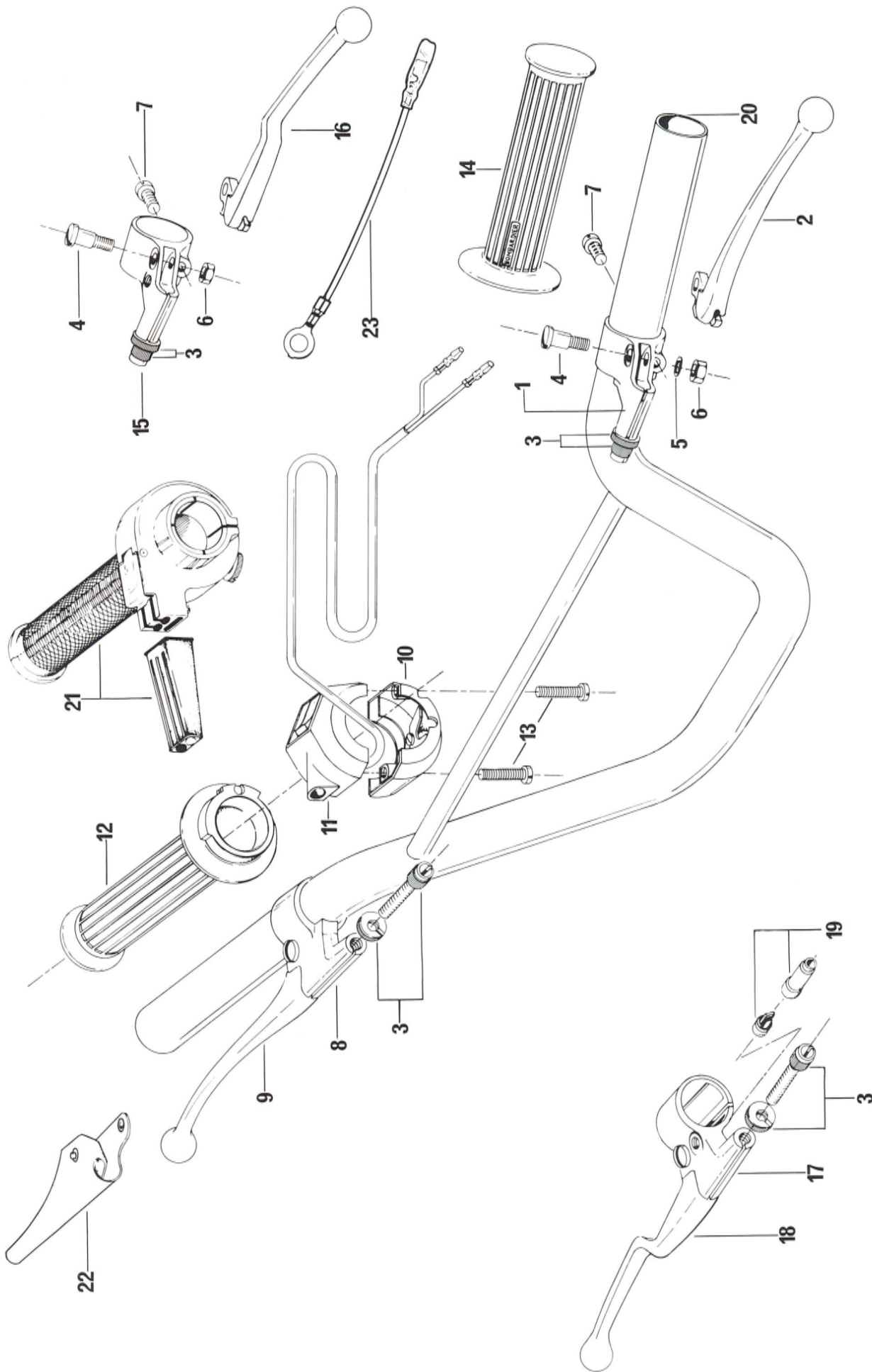
ITEM NO	PART NUMBER	DESCRIPTION	MX-1	MX-1	Flat
			125	175	Rate Time
1	746 004 000	Bushing, Flanged	4	4	0.4
2	732 501 001	Shim .036"	as required		—
	732 501 000	Shim .018"	as required		—
3	746 003 000	Bushing, Swing Arm	2	2	0.7
4	228 561 015	Nut M6 X 1.00 Elastic Stop	2	2	—
5	224 061 120	Washer 6 mm X 12 X 1.50	6	6	—
6	746 040 000	Guard, Chain	1	1	0.1
7	222 065 015	Screw M6 X 1.00 X 50	2	2	—
8	746 034 001	Washer 17 mm, X 28 X 2	2	2	—
9	746 017 000	Adjuster, Cam	2	2	0.1
10	222 084 015	Screw M8 X 1.25 X 40	2	2	—
11	224 081 170	Washer 8 mm, X 17 X 2	6	6	—
12	228 581 015	Nut M8 X 1.25 Elastic Stop	4	4	—
13	742 005 001	Shock Absorber S & W w/55 lb Spring	2	2	0.1
	742 005 000	Shock Absorber Girling w/75 lb Spring	optional		D.N.A
14	742 033 002	Collar, Spring S & W	4	4	0.1
	742 033 000	Collar, Spring Alloy Girling	optional		D.N.A
	742 033 001	Collar, Spring Steel Girling	optional		D.N.A
15	742 006 001	Spring, Shock Absorber 88 lb (Girling) Color Code: Yellow/White/Yellow	optional		D.N.A
	742 006 003	Spring, Shock Absorber 55 lb, No Color Code	2	2	0.1
	742 006 004	Spring, Shock Absorber 65 lb, Color Code: Yellow	optional		D.N.A
	742 006 005	Spring, Shock Absorber 45/70 lb, Color Code: Yellow/Yellow	optional		D.N.A
	742 006 006	Spring, Shock Absorber 60/90 lb Color Code: White	optional		D.N.A
16	222 083 515	Screw M8 X 1.25 X 35 Spacer	2	2	0.1
17	746 037 000	Spacer	1	1	0.1
18	222 061 815	Screw M6 X 1.00 X 18	1	1	—
19	746 038 000	Guide, Chain	1	1	0.1
20	732 301 000	Spring, Side Stand	1	1	0.1
21	746 021 000	Stand, Side	1	1	0.1
22	222 003 515	Screw M10 X 1.50 X 35	1	1	—
23	224 001 210	Washer 10 mm, X 21 X 2.5	1	1	—
24	228 501 015	Nut M10 X 1.50 Elastic Stop	1	1	—
25	746 066 000	Swing Arm	1	1	0.5
26	742 043 000	Adjuster Ring (S & W)	2	2	0.1
27	742 007 002	Dampener	2	2	0.2

CONTROLS



Handlebar MX

Handlebar T'N1

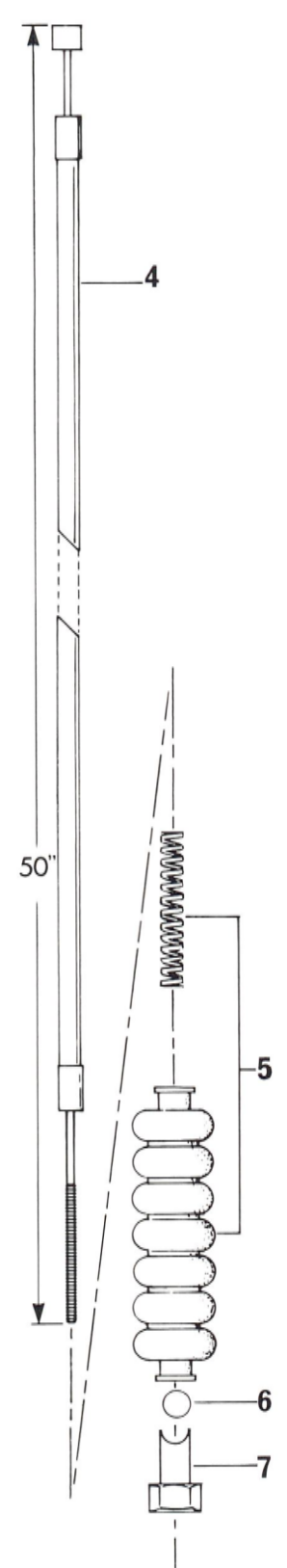
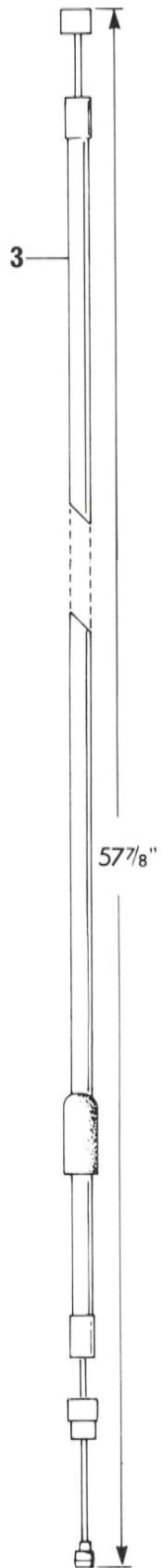
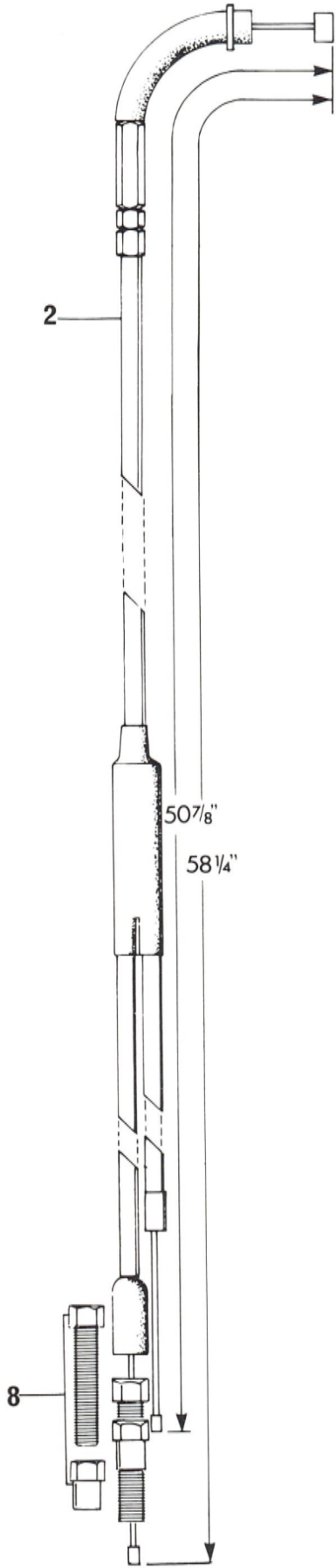
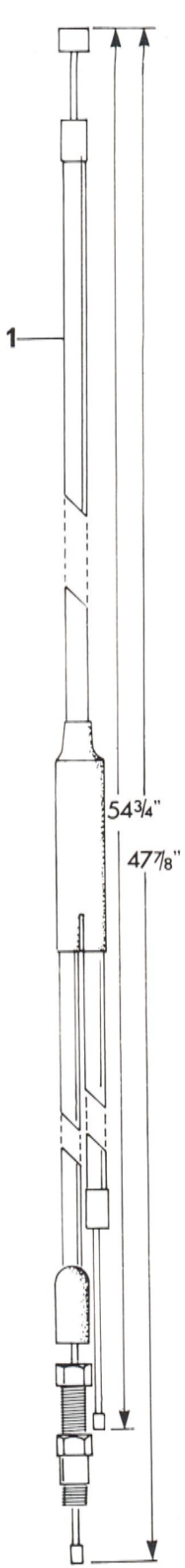


HANDLEBAR

1974

ITEM NO	PART NUMBER	DESCRIPTION	MX-1 125	MX-1 175	Flat Rate Time
1 to 7	737 003 001	Lever, Clutch Ass'y Magura	1	1	0.1
2	737 008 001	Lever Only, Clutch Magura	1	1	0.1
3 to 9	737 002 001	Lever, Brake Ass'y Magura	1	1	0.1
3	741 005 001	Screw, Cable Adjuster, Clutch And Brake Magura	2	2	0.1
4	737 010 001	Bolt, Pivot, Clutch And Brake Magura	2	2	0.1
5	224 061 120	Washer 6 mm, X 12 X 1.5 Flat	2	2	—
6	228 561 015	Nut M6 X 1.25 Elastic Stop	4	4	0.1
7	737 011 000	Screw M6 X 15 Brake And Clutch Clamp Magura	4	4	0.1
9	737 007 001	Lever Only, Brake Magura	1	1	0.1
10 to 13	738 018 000	Throttle And Stop Switch Assembly	1	1	0.3
12	737 004 000	Grip, Rubber Throttle	1	1	0.1
	737 004 001	Grip, Rubber Throttle Magura	optional		D.N.A.
13	222 552 515	Screw, M5 X 25 Stop Switch Ass'y	2	2	—
14	737 005 000	Grip, Rubber Left	1	1	0.1
	737 005 001	Grip, Rubber Left Magura	optional		D.N.A.
3 - 4	737 003 004	Power Lever Clutch Ass'y Magura	optional		D.N.A.
6 - 7					
15 - 16					
16	737 008 002	Power Lever Only, Clutch Magura	optional		D.N.A.
3 - 4	737 002 004	Power Lever Brake Ass'y Magura	optional		D.N.A.
6 - 7					
17 - 18					
18	737 007 002	Power Lever Only, Brake Magura	optional		D.N.A.
19	738 021 001	Switch, Front Brake Light	optional		D.N.A.
20	737 006 000	Handlebar Black	1	1	0.2
	737 006 002	Handlebar Chromed	optional		D.N.A.
21	738 018 001	Throttle, Magura	optional		D.N.A.
22	737 013 000	Lever Cover, Magura	optional		D.N.A.
23	730 603 000	Wire Sub-Ass'y	1	1	0.1

Cables

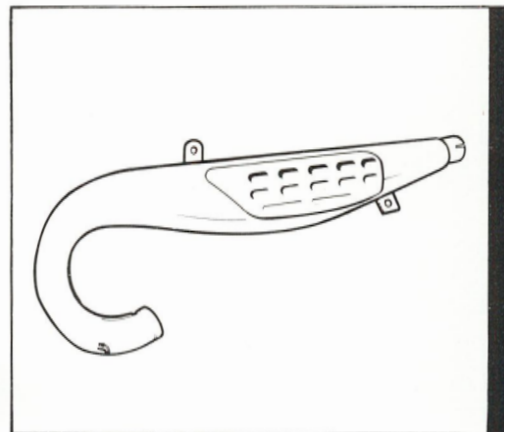


CABLES

1974

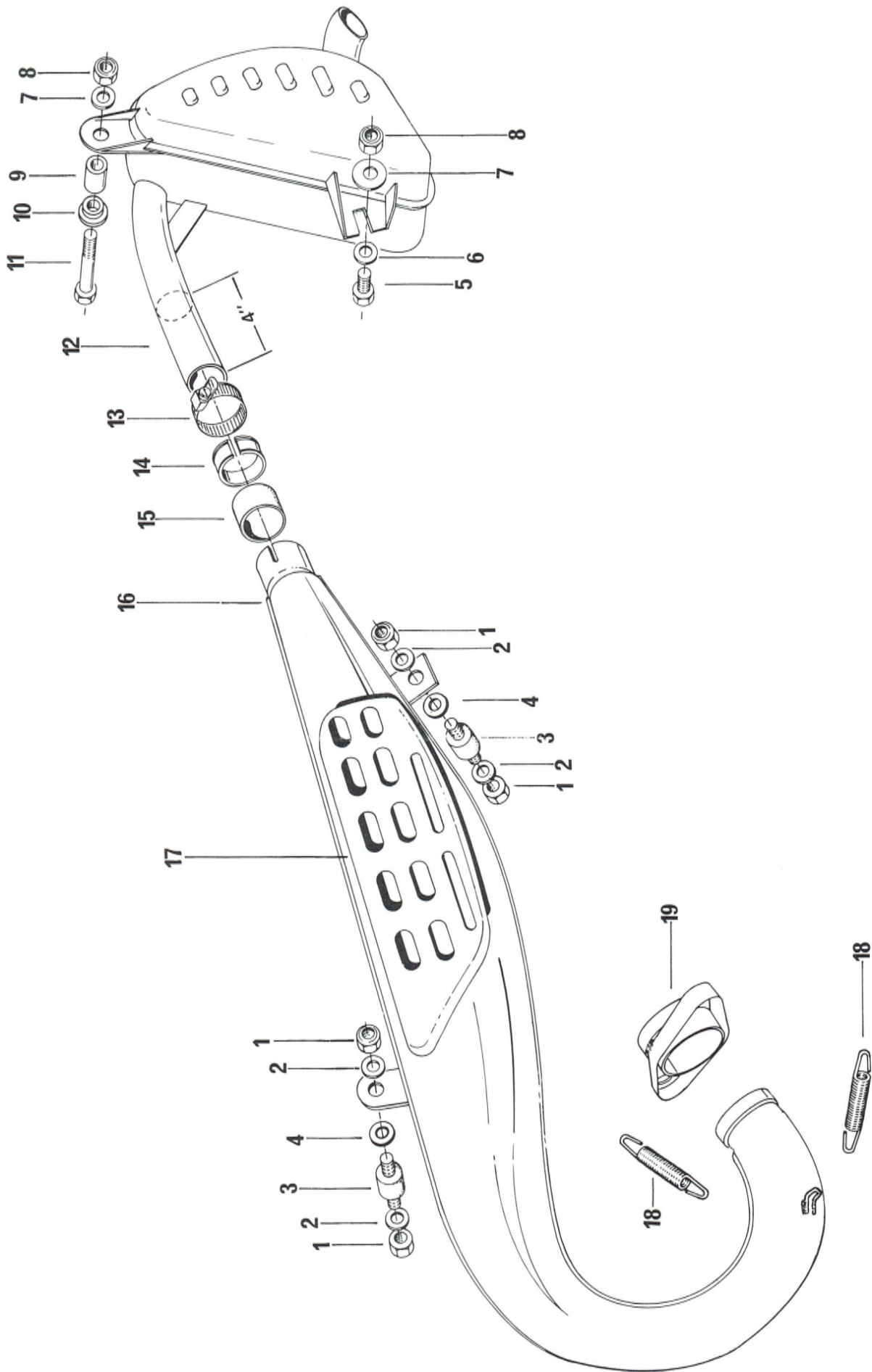
ITEM NO	PART NUMBER	DESCRIPTION	MX-1 125	MX-1 175	Flat Rate Time
1	741 004 001	Cable, Throttle Magura to Bing	optional		D.N.A.
2	741 004 000	Cable, Throttle	1	1	0.3
3	741 003 000	Cable, Clutch	1	1	0.2
4	741 002 000	Cable, Brake	1	—	0.1
	741 002 000	Cable, Brake (For Serial No 4853 000000 to 4853 000405)	—	1	0.1
	741 002 002	Cable, Brake (For Serial No 4853 000406 to 4853 000541)	—	1	0.1
5	741 011 000	Spring, Boot Ass'y - Front Brake	1	1	—
6	741 009 000	Barrel, Front Brake Cable	1	1	—
7	741 010 000	Screw, Adjuster Front Brake	1	1	—
8	741 005 002	Adjuster, Oil Pump Cable	1	1	—

EXHAUST SYSTEM



Exhaust Pipe

Muffler



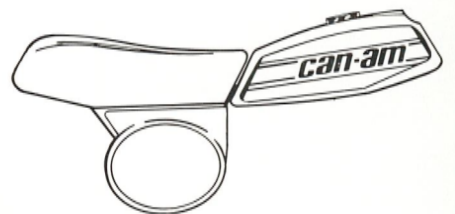
EXHAUST SYSTEM

1974

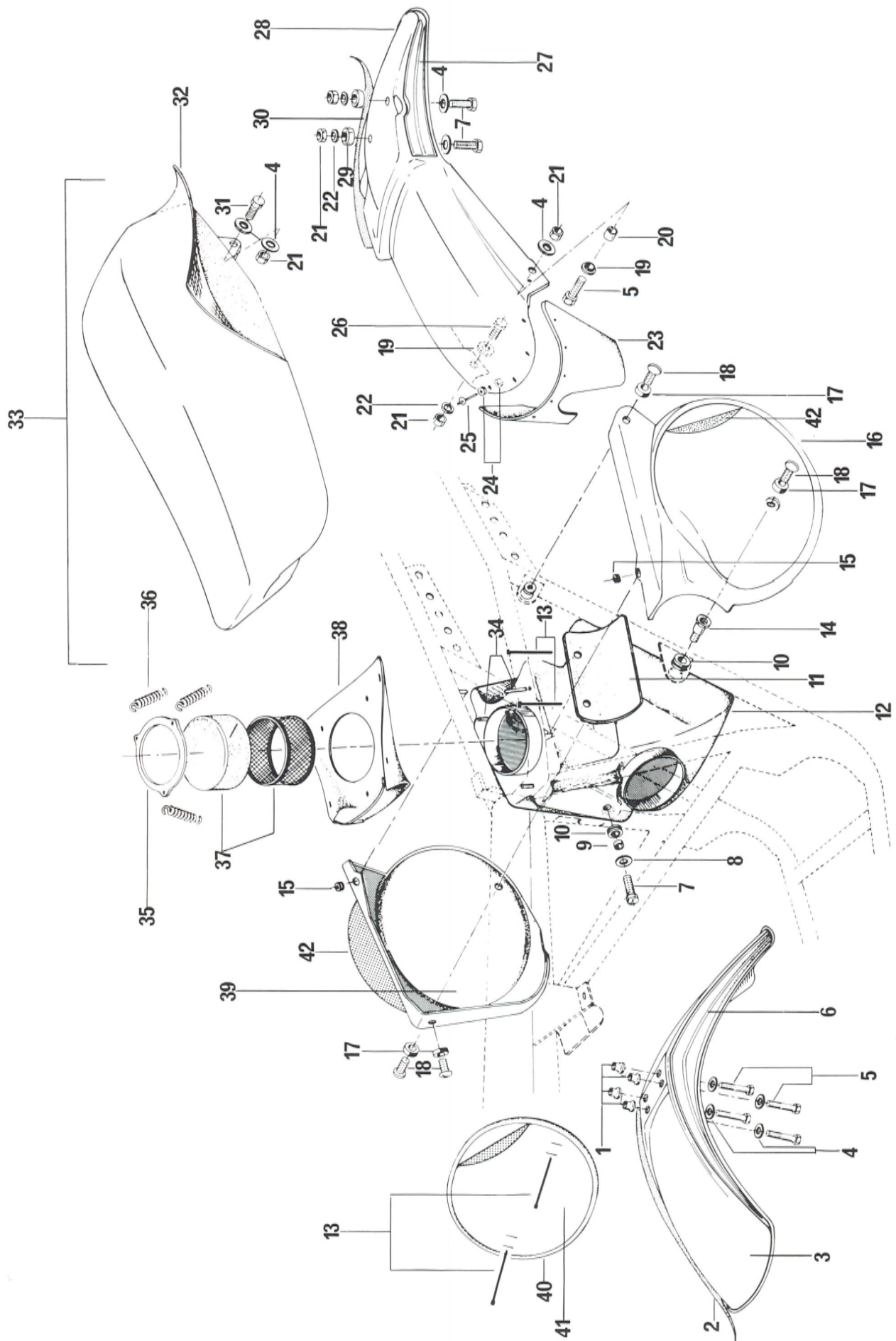
ITEM NO	PART NUMBER	DESCRIPTION	MX-1 125	MX-1 175	Flat Rate Time
1	387 0019 00	Nut 1/4 20 NC Elastic Stop	4	4	—
2	399 9015 00	Washer Flat 9/32 X 5/8 X 0.060	4	4	—
3	748 004 001	Rubber Mount	2	2	0.1
4	745 001 000	Asbestos Washer	2	2	—
5	222 062 515	Screw Hex. Head Cap M6 X 1.00 X 25	1	1	—
6	224 061 120	Washer, Flat 6 mm X 12 X 1.50	1	1	—
7	224 060 200	Washer, Flat 6 mm X 20 X 1.00	2	2	—
8	228 561 015	Nut, Elastic Stop M6 X 1.00	2	2	—
9	746 077 000	Spacer, Shock Bracket	1	1	0.1
10	744 001 000	Step Washer	1	1	—
11	222 064 015	Screw, Hex. Head Cap M6 X 1.00 X 40	1	1	—
12	745 003 002	Muffler	1	1	0.2
13	740 002 005	Hose Clamp, Tridon H.A.S. 16	1	1	—
14	745 008 001	Collar, Muffler	1	1	0.3
15	745 006 000	Packing, Muffler	1	1	0.3
16 - 17	745 002 002	Exhaust Pipe	1	1	0.4
17	745 004 000	Heat Shield	1	1	0.2
18	732 307 000	Spring	2	2	0.1
19	745 009 000	Flange Weldment, Exhaust Pipe	1	1	0.4

Note: To Produce a 175 cc. Muffler From a 125 cc. Muffler
Requires a Section of 4" Cut From Reverse Stinger as
Shown in Drawing

BODY



Body Parts



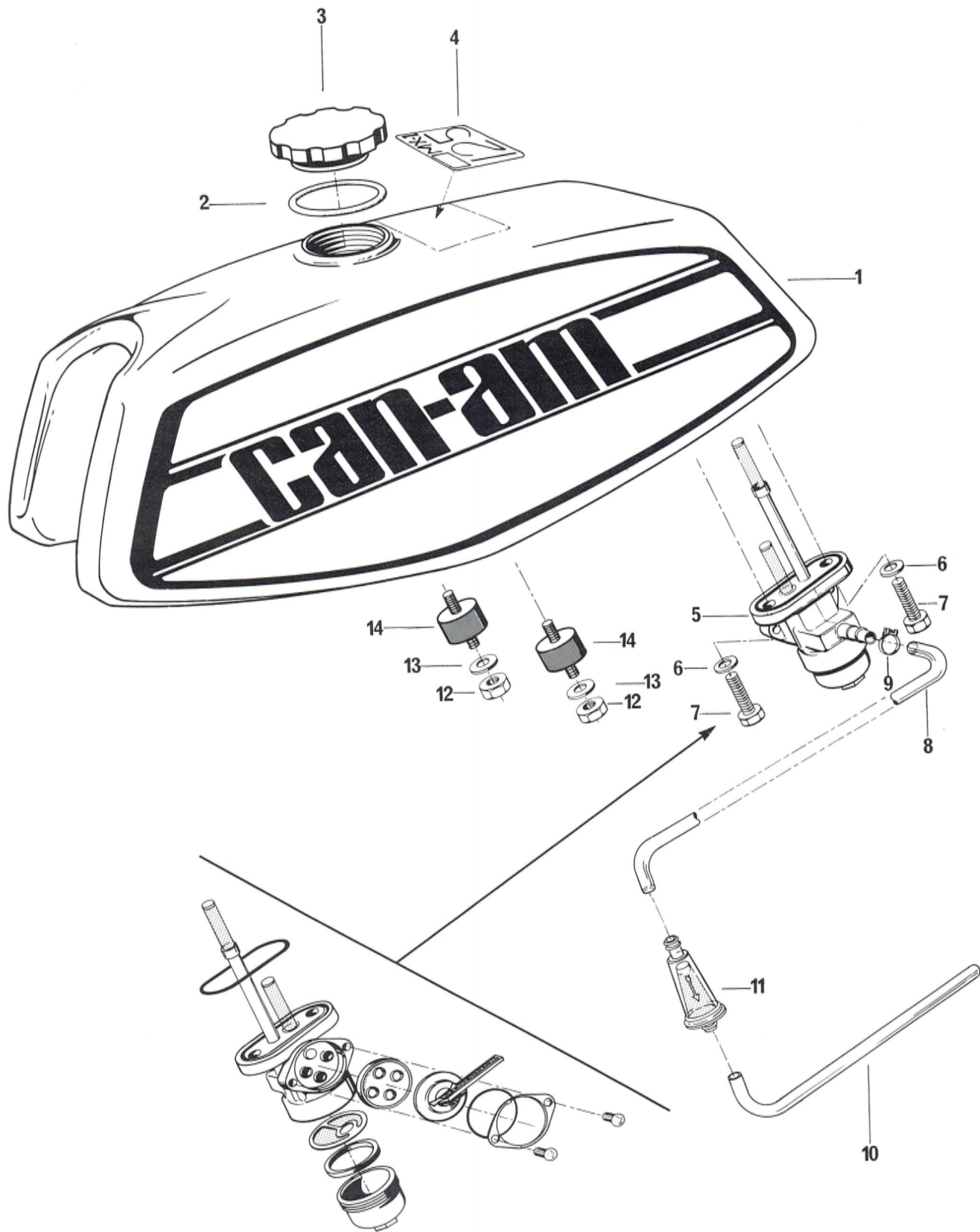
BODY PARTS

1974

ITEM NO	PART NUMBER	DESCRIPTION	MX-1 125	MX-1 175	Flat Rate Time
1	744 002 000	Spacer, Front Fender	4	4	0.1
2	744 026 000	Decal R.H. Front Fender	1	1	0.1
3	744 025 000	Front Fender	1	1	0.2
4	224 060 200	Washer, Flat 6 mm, X 20 X 1.00	11	11	—
5	222 064 015	Screw, Hex. Head Cap M6 X 1.00 X 40	5	5	—
6	744 026 001	Decal L.H. Front Fender	1	1	0.1
7	305 1003 00	Screw 1/4 .20 X 1"	1	1	—
8	391 3020 00	Washer 17/64 i.d. X 7/8 o.d. X .060	1	1	—
9	748 005 000	Spacer Grommet	1	1	0.1
10	748 006 000	Grommet	3	3	—
11	744 050 000	Heat Insulator (Muffler)	1	1	0.3
12	740 006 002	Air Box	1	1	0.5
13	748 001 000	Tie Wrap 8"	4	4	—
14	744 045 001	Step Bolt	2	2	0.1
15	748 010 000	Grommet	2	2	—
16	744 023 000	Side Panel L.H. (w/o White decal)	1	1	0.1
17	748 016 000	Rubber Washer	4	4	—
18	223 861 615	Screw M6 X 1.00 X 16	4	4	—
19	744 001 000	Step Washer	1	1	—
20	746 077 000	Spacer (Shock Bracket)	1	1	0.1
21	228 561 015	Nut Elastic Stop M6 X 1.00	6	6	—
22	224 061 120	Washer 6 mm, X 12 X 1.5	3	3	—
23	748 008 000	Rubber Flap, Rear Fender	1	1	0.5
24	391 3008 00	Washer	14	14	—
25	390 4016 00	Pop Rivet 1/8 X .481 lg	7	7	—
26	222 061 815	Screw Hex. Head Cap M6 X 1.00 X 18	1	1	—
27	744 018 001	Decal L.H. Rear Fender	1	1	0.1
28	744 017 000	Rear Fender	1	1	0.3
29	744 027 000	Spacer, Rear Fender	2	2	—
30	744 018 000	Decal R.H. Rear Fender	1	1	0.1
31	222 061 615	Screw Hex. Head Cap M6 X 1.00 X 16	2	2	—
32	744 014 000	Cover Seat	1	1	0.3
33	744 013 000	Seat Ass'y	1	1	0.1
34	748 030 000	Pin (Air Box)	3	3	0.2
35	740 010 000	Retainer - Air Filter	1	1	0.3
36	732 302 000	Spring, Air Box Filter	3	3	—
37	740 007 000	Air Filter Ass'y	1	1	0.1
38	748 017 000	Rubber Shield, Air Filter	1	1	0.2
39	744 022 000	Side Panel R.H. (w/o White Decal)	1	1	0.1
40	744 003 001	Number Plate (w/o White Decal)	1	1	0.1
41	744 053 000	Decal Number Plate (White)	1	1	0.1
42	744 053 001	Decal Side Panel (White)	2	2	0.1

Fuel Tank



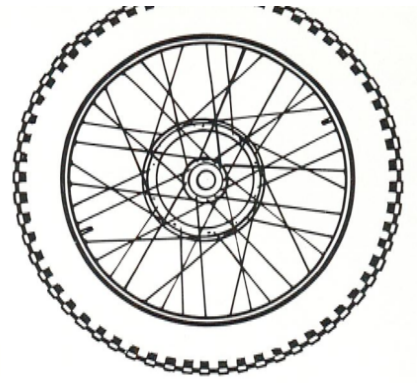


FUEL TANK

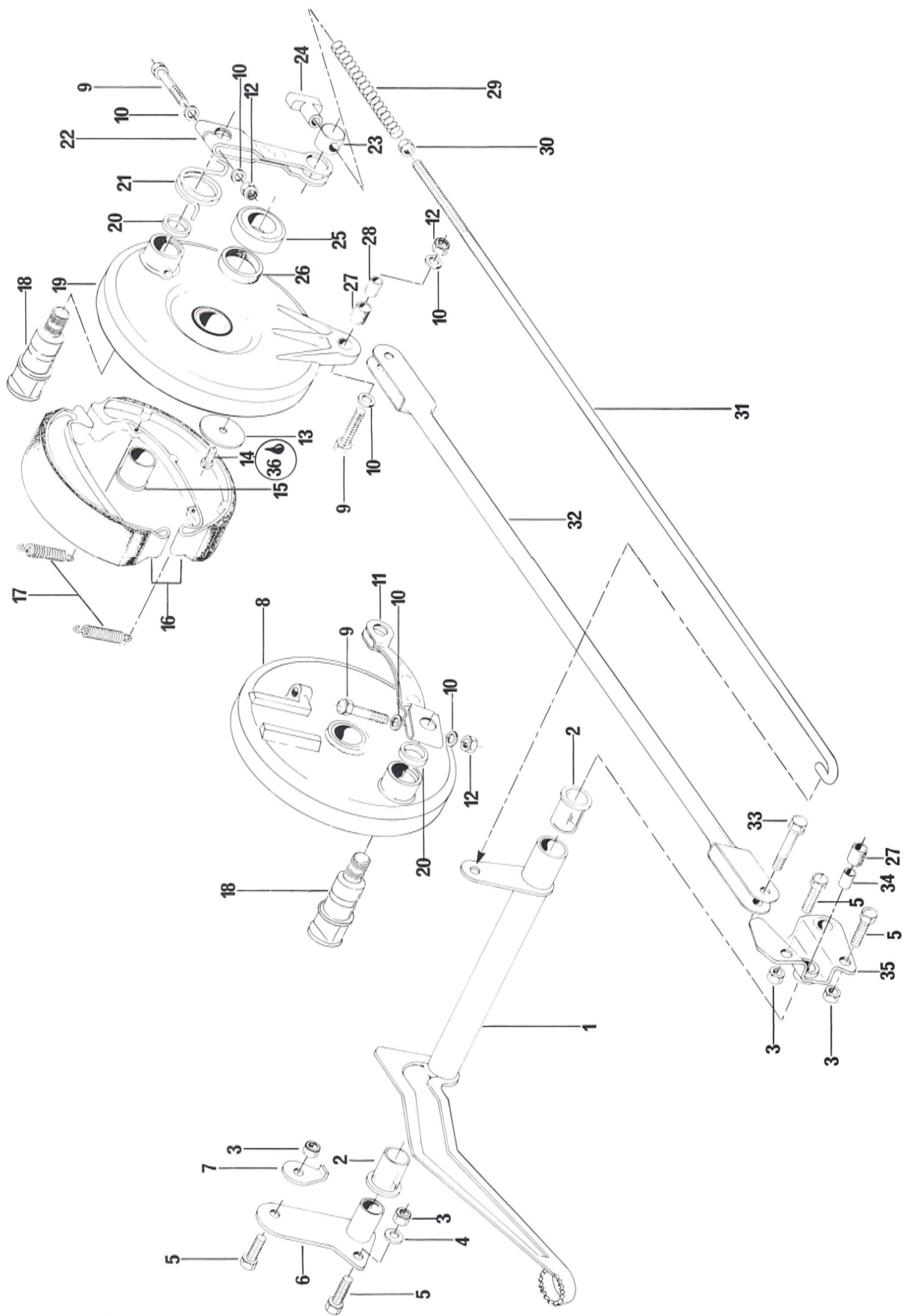
1974

ITEM NO	PART NUMBER	DESCRIPTION	MX-1		Flat Rate Time
			125	175	
1 to 3	744 019 002	Fuel Tank Silk Screened, With Cap & "O" Ring	1	1	0.2
2	732 401 001	O'Ring 1 7/8 X 2 1/8 X 1/8	1	1	-
3	744 010 001	Fuel Tank Cap	1	1	0.1
4	744 006 004	Label-Model And Size	1	-	0.1
	744 006 005	Label-Model And Size	-	1	0.1
5	744 021 000	Fuel Valve	1	1	0.1
6	399 9061 00	Fiber Washer 9/32 X 1/2 X 1/16	2	2	-
7	300 5001 00	Screw 1/4-20 Nc X 3/4 Lg.	2	2	-
8	414 1372 00	Tube (3" Long)	25 ft roll		0.1
9	408 8013 00	Hose Clamp	1	1	-
10	414 1372 00	Tube (6" Long)	25 ft roll		0.1
11	744 028 000	Filter	1	1	0.1
12	387 0019 00	Nut 1/4-20 Nc Elastic Stop	2	2	-
13	399 0015 00	Flat Washer 9/32 X 5/8 X 0.60	2	2	-
14	748 004 001	Rubber Mount	2	2	0.1

WHEELS



Brake System

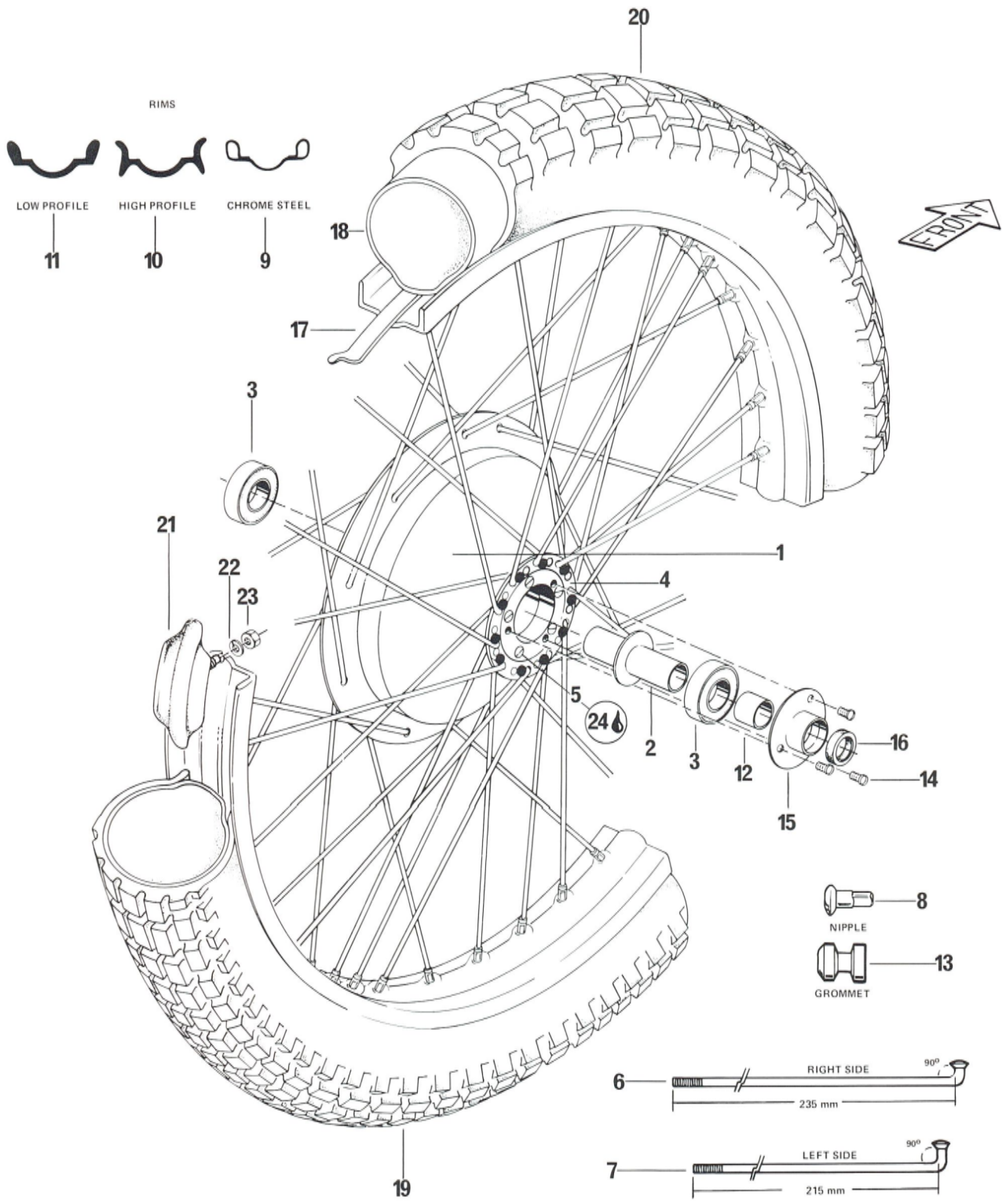


BRAKE SYSTEM

1974

ITEM NO	PART NUMBER	DESCRIPTION	MX-1	MX-1	Flat
			125	175	Rate Time
1	746 039 000	Brake Pedal	1	1	0.2
2	746 020 001	Nylon Bushing	2	2	0.2
3	228 581 015	Nut M8 X 1.25 Elastic Stop	4	4	—
4	224 081 170	Washer 8 mm, X 17 X 2	1	1	—
5	222 082 015	Screw M8 X 1.25 X 20 Hex. Head	4	4	—
6	746 018 000	Pivot Mount R.H.	1	1	0.2
7	746 081 000	Stop Adjuster (Brake Pedal)	1	1	0.1
8	743 029 000	Backing Plate, Front w/Insert	1	1	0.3
9	222 063 515	Screw Hex. Head M6 X 1.00 X 35	3	3	—
10	224 061 120	Washer 6 mm, X 12 X 1.50	6	6	—
11	743 039 000	Brake Arm, Front	1	1	0.1
12	228 561 015	Nut Elastic Stop M6 X 1.00	3	3	—
13	743 026 000	Washer — Brake Shoe	2	2	—
14	222 551 015	Screw Slotted Pan Head M5 X 10	2	2	—
15	746 016 001	Spacer, L.H. Axle Rear	4	4	0.3
16	743 032 000	Brake Shoe	4	4	0.2
17	732 303 001	Spring, Brake Shoe	4	4	0.2
18	743 033 000	Cam	2	2	0.3
19	743 030 000	Backing Plate Rear	1	1	0.3
20	732 106 000	Felt Seal	2	2	0.2
21	732 304 000	Spring, Brake Arm Rear	1	1	0.2
22	743 038 000	Brake Arm, Rear	1	1	0.2
23	746 032 000	Barrel — Brake Rod	1	1	0.1
24	746 033 000	Adjuster Nut	1	1	0.1
25	746 016 003	Spacer, Rear Backing Plate	1	1	0.3
26	732 103 000	Seal Ring	1	1	0.2
27	743 036 000	Rubber Cushion	2	2	0.2
28	743 035 000	Bushing, Torque Arm	1	1	0.2
29	732 305 000	Spring, Brake Rod	1	1	0.1
30	228 061 015	Nut M6 X 1.00	1	1	—
31	746 030 000	Brake Rod	1	1	0.1
32	746 026 000	Torque Arm Weld	1	1	0.2
33	746 026 003	Screw 1/4-28 NF X 1 1/8 NF FL	1	1	—
34	743 035 001	Bushing, Front Torque Arm	1	1	0.2
35	746 019 000	Pivot Mount L.H.	1	1	0.2
36	747 020 000	Loctite No 271	as required		—

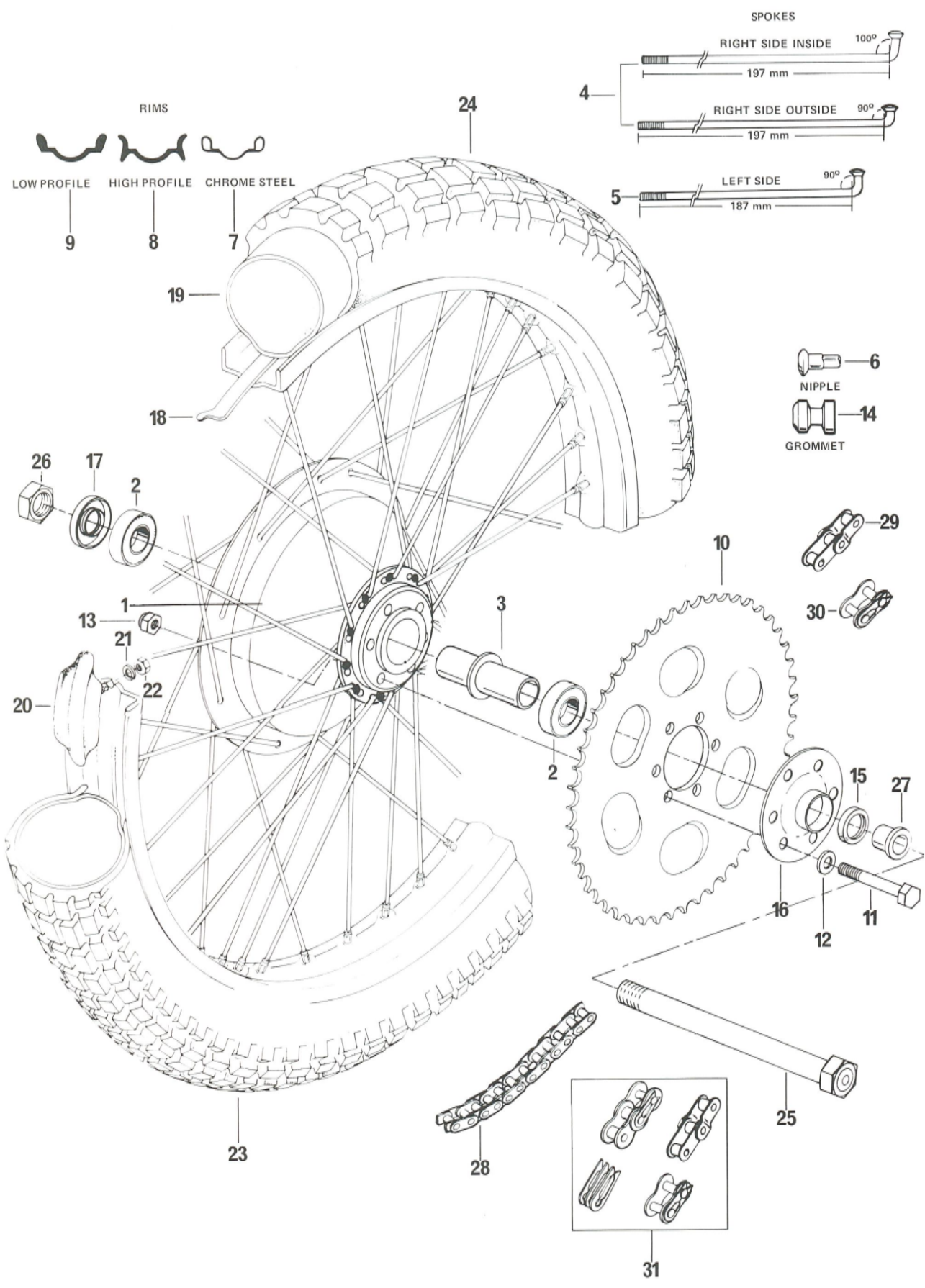
**Wheels,
Rear
and Front.**



FRONT WHEEL

1974

ITEM NO	PART NUMBER	DESCRIPTION	MX-1	MX-1	Flat
			125	175	Rate Time
1 to 9	743 001 002	Front Wheel Ass'y	1	1	D.N.A
1	743 019 000	Front Hub	1	1	1.6
2	743 025 000	Spacer	1	1	0.6
3	732 705 000	Bearing	2	2	0.6
4	743 027 001	Flange	1	1	1.0
5	223 061 215	Screw Flat Head, Small Head M6 X 1.00 X 12	5	5	—
6	743 012 002	Spoke R.H.	20	20	—
7	743 012 003	Spoke L.H.	20	20	—
8	743 014 000	Nipple	40	40	—
9	743 015 000	Rim (Chrome Steel)	1	1	1.6
10	743 015 002	Rim (Alloy High Profile)	optional		D.N.A
11	743 015 003	Rim (Alloy Low Profile)	optional		D.N.A
12	746 008 000	Spacer R.H.	1	1	0.2
13	748 029 000	Grommet (Spoke Flange)	10	10	—
14	222 530 515	Screw M3 X 0.50 X 5	3	3	—
15	743 013 001	Seal Holder	1	1	0.2
16	732 101 000	Seal 20 X 30 X 7	1	1	—
17	743 022 000	Rim Liner	1	1	0.3
18	743 010 000	Tube	1	1	0.3
19	743 007 000	Tire, Trials Universal Yokohama 300-21/y-620 (4 ply)	optional		D.N.A
	743 007 003	Tire, Trials Universal Chengshin 300-21/uy 24-253 (4 ply)	optional		D.N.A
20	743 007 001	Tire, Knobby Trelleborg 300-21/4-544 (4 ply)	optional		D.N.A
	743 007 002	Tire, Knobby Yokohama 300-21/y611 (4 ply)	1	1	0.3
21 to 23	743 052 000	Rim Lock	1	1	0.3
22	224 781 140	Lock Washer 8 mm	1	1	—
23	228 081 015	Nut M8 X 1.25	1	1	—
24	747 020 000	Loctite No 271	as required		D.N.A

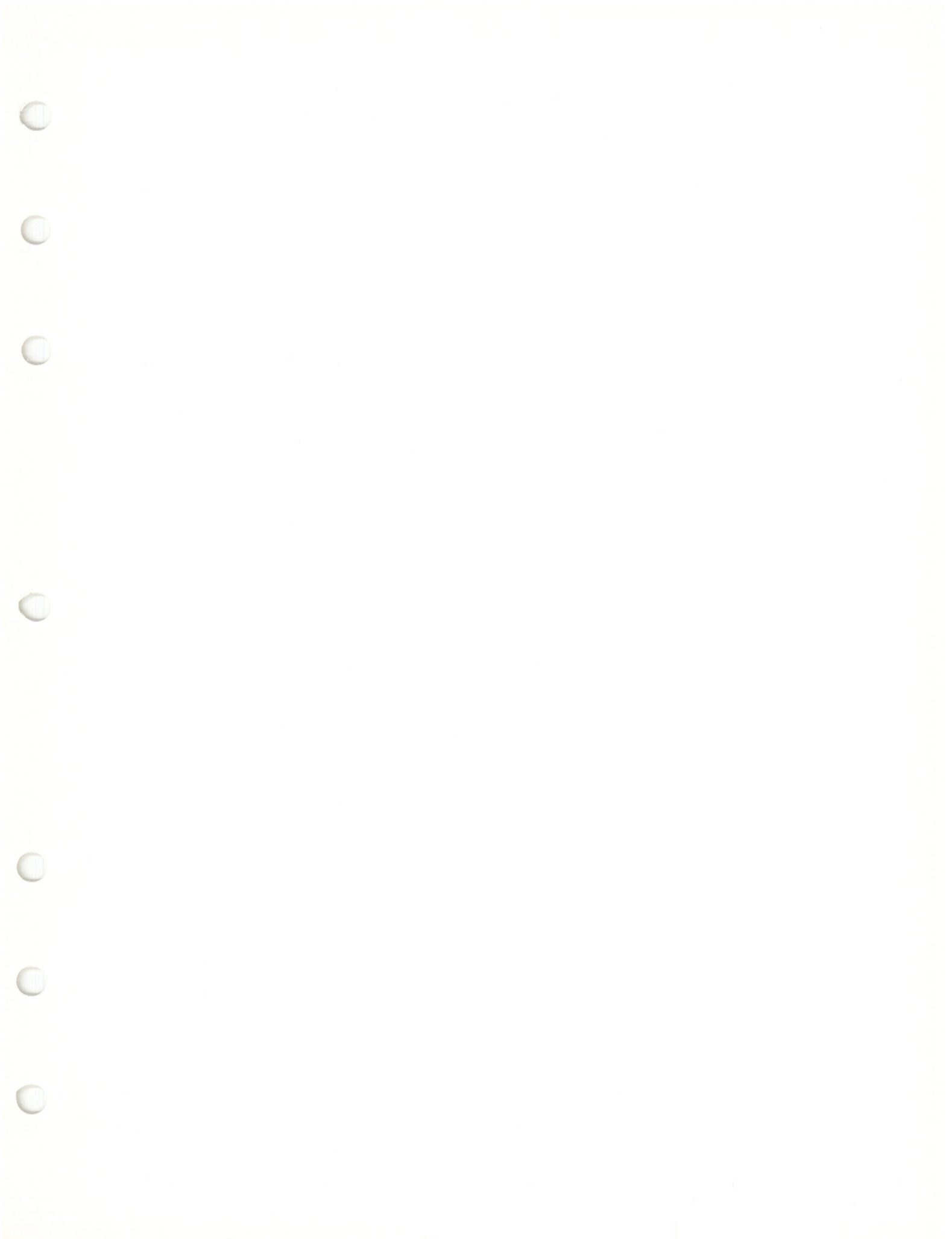


REAR WHEEL

1974

ITEM NO	PART NUMBER	DESCRIPTION	MX-1 125	MX-1 175	Flat Rate Time
1 to 7	743 002 004	Rear Wheel Ass'y	1	1	D.N.A
1	743 040 001	Rear Hub	1	1	2.0
2	732 706 000	Bearing 6303 RS	2	2	0.6
3	743 025 001	Spacer	1	1	0.6
4	743 012 005	Spoke R.H. (Outside)	10	10	—
	743 012 006	Spoke R.H. (Inside)	10	10	—
5	743 012 001	Spoke L.H.	20	20	—
6	743 014 000	Nipple	40	40	—
7	743 016 000	Rim (Chrome Steel)	1	1	2.0
8	743 016 002	Rim (Alloy High Profile)	optional		D.N.A
9	743 016 003	Rim (Alloy Low Profile)	optional		D.N.A
10	743 043 012	Sprocket 46T	—	1	0.6
	743 043 010	Sprocket 42T	optional		D.N.A
	743 043 014	Sprocket 50T	1	—	0.6
	743 043 011	Sprocket 44T	optional		D.N.A
	743 043 013	Sprocket 48T	optional		D.N.A
	743 043 015	Sprocket 52T	optional		D.N.A
	743 043 016	Sprocket 54T	optional		D.N.A
	743 043 017	Sprocket 56T	optional		D.N.A
	743 043 020	Sprocket 40T	optional		D.N.A
	743 043 021	Sprocket 38T	optional		D.N.A
	743 043 022	Sprocket 47T	optional		D.N.A
11	222 084 515	Screw M8 X 1.25 X 45	6	6	—
12	224 081 170	Washer 8 mm, X 17 X 2	12	12	—
13	228 581 015	Nut Elastic M8 X 1.25	6	6	—
14	748 029 000	Grommet	10	10	—
15	732 102 000	Seal	1	1	—
16	743 037 000	Cover	1	1	0.6
17	732 104 000	Seal	1	1	—
18	743 021 000	Rim Liner	1	1	0.3
19	743 011 000	Tube	1	1	0.3
20 to 22	743 052 004	Rim Lock	2	2	0.3
21	224 781 140	Lock Washer 8 mm	2	2	—
22	228 081 015	Nut M8	2	2	—
23	743 006 003	Tire, Trials Universal Yokohama 400-18/y-620 (4 ply)	optional		D.N.A.
	743 006 003	Tire, Trials Chengshin 400-18/oxy2-123 (4 ply)	optional		D.N.A.
24	743 006 001	Tire, Knobby Trelleborg 400-18/4-544 (4 ply)	optional		D.N.A.
	743 006 002	Tire, Knobby Yokohama 400-18/y-612 (4 ply)	1	1	0.3
25	743 004 000	Rear Axle	1	1	0.2
26	746 035 001	Nut, Axle	1	1	—
27	746 016 000	Spacer R.H.	1	1	—
28	743 047 000	* Chain Reynolds 110054 (25 ft Roll)	optional		D.N.A.
	743 047 001	* Chain Diamond A/520/118 (25 ft Roll)	—	—	0.3
29	743 044 000	Half Link For Renold Chain 110054	optional		—
	743 044 001	Half Link For Diamond Chain A/520/148	—	—	—
30	743 045 000	Master Link For Reynold Chain 110054	—	—	—
	743 045 001	Master Link For Diamond Chain A/520/148	—	—	—
31	743 046 000	Link Kit For Reynold Chain 110054	—	—	—
	743 046 001	Link Kit For Diamond Chain A/520/148	—	—	—

* Chain Length: 104 Rollers, 125 MX
101 Rollers, 175 MX





PRINTED
IN
CANADA